

WAAS CH <b>82317</b> <b>W25A</b>	APP CRS <b>245°</b>	Rwy Idg <b>11800</b> TDZE <b>624</b> Apt Elev <b>633</b>
--	------------------------	--

RNAV (GPS) RWY 25  
OSCODA/WURTSMITH (OSC)

RNP APCH.

**▼ Circling NA southeast of Rwy 7-25. Baro-VNAV and VDP NA when using Alpena altimeter setting. For uncompensated Baro-VNAV systems, LNAV/VNAV NA below -16°C or above 54°C. When local altimeter setting not received, use Alpena altimeter setting and increase all DA 96 feet and all MDA 100 feet. Increase LNAV/VNAV all Cats and LNAV and Circling Cat C visibility ¼ SM, and Circling Cat D visibility ½ SM. For inop ALS, increase LNAV Cats C and D visibility to 1 SM. For inop ALS when using Alpena altimeter setting, increase LPV all Cats visibility to ¾ SM.**

MALS

**MISSED APPROACH.**  
Climb to 3000 direct  
CEDPA and hold.

AWOS-3 <b>118.7</b>	MINNEAPOLIS CENTER <b>125.475 269.45</b>	UNICOM <b>123.0 (CTAF)</b> 
------------------------	---	---

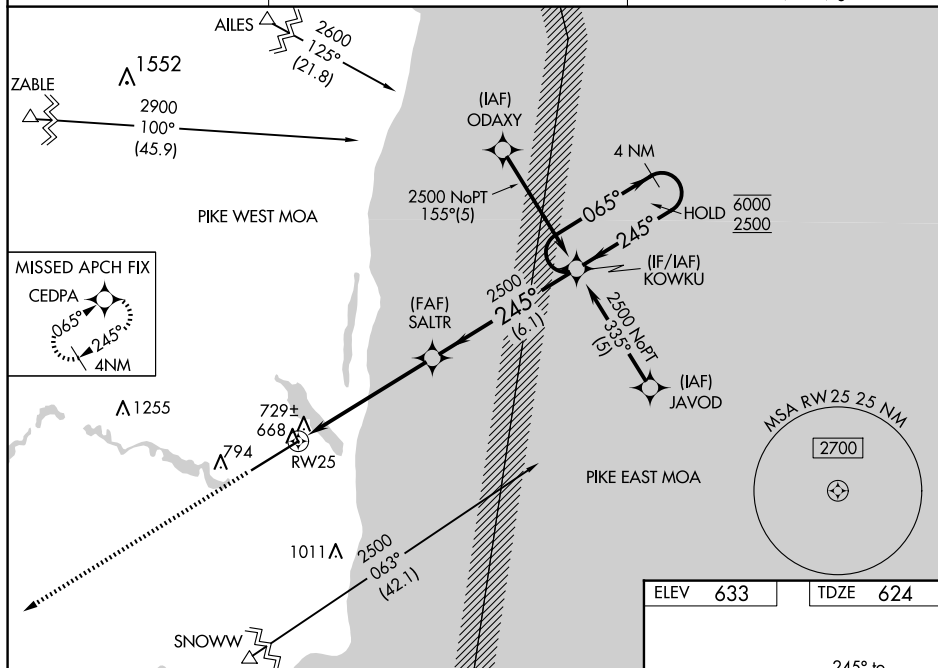
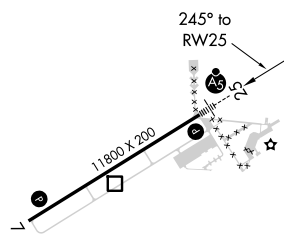


Diagram illustrating a holding pattern for RW25. The pattern is defined by the following parameters:

- Initial Turn:** 0.9 NM to RW25.
- First Leg:** 4.7 NM to SALTR.
- Second Leg:** 6.1 NM to KOWKU.
- Third Leg:** 0.9 NM back to RW25.
- Holding Pattern:** 4 NM wide.
- Angles:** 245° and 065° are indicated for the turns.
- GP 3.00° TCH 56.**



REIL Rwy 7 **L**  
HIRL Rwy 7-25 **L**