

LOC I-LJU <u>108.5</u>	APP CRS 245°	Rwy Idg 11800 TDZE 624 Apt Elev 633
----------------------------------	------------------------	--

ILS or LOC RWY 25
OSCODA/WURTSMITH (OSC)

DME required.

NA Circling NA southeast of Rwy 7-25. For inop ALS, increase S-LOC Cats C and D visibility to 1 SM. DME from ASP DME. Simultaneous reception of I-JU and ASP DME required.

MALSR



MISSED APPROACH: Climb to 1300 then climbing right turn to 3000 on heading 030° and on APN VORTAC R-175 to LEGOR/APN 15 DME and hold.

AWOS-3 118.7	MINNEAPOLIS CENTER 125.475 269.45	UNICOM 123.0 (CTAF) 0
------------------------	---	---------------------------------

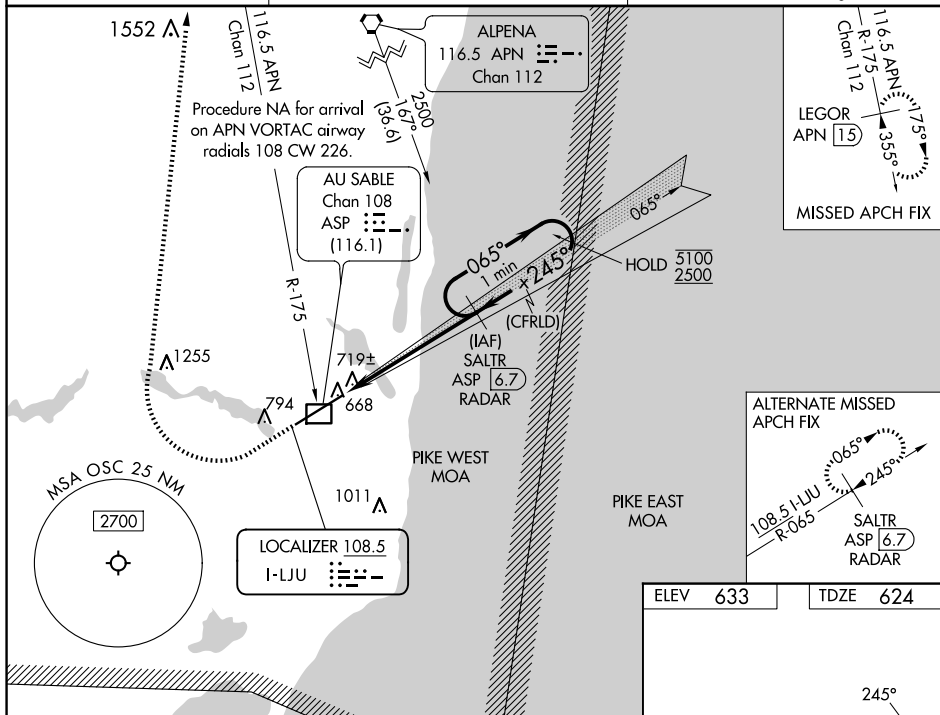


Diagram illustrating the VOR/DME station layout and associated data:

- VOR Frequency:** 1300
- DME Frequency:** 3000
- Heading:** hdg 030°
- APN (Altitude):** APN R-175, APN 15, APN 6.7
- Station Name:** LEGOR
- Notes:** VGS1 and ILS glidepath not coincident (VGS1 Angle 3.00°/TCH 72), One Minute Holding Pattern, SALTR, RADAR, 2500, 065°, 245°, 5100, 2500, GS 3.00°, TCH 56, 0.9 NM, 4.7 NM.

REIL Rwy 7 **L**
HIRL Rwy 7-25 **L**