

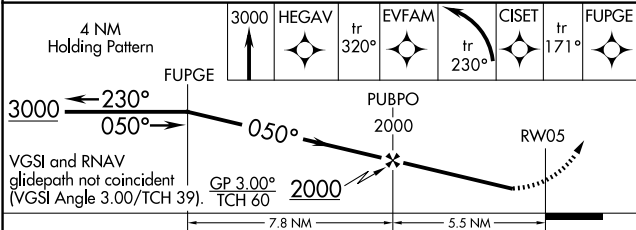
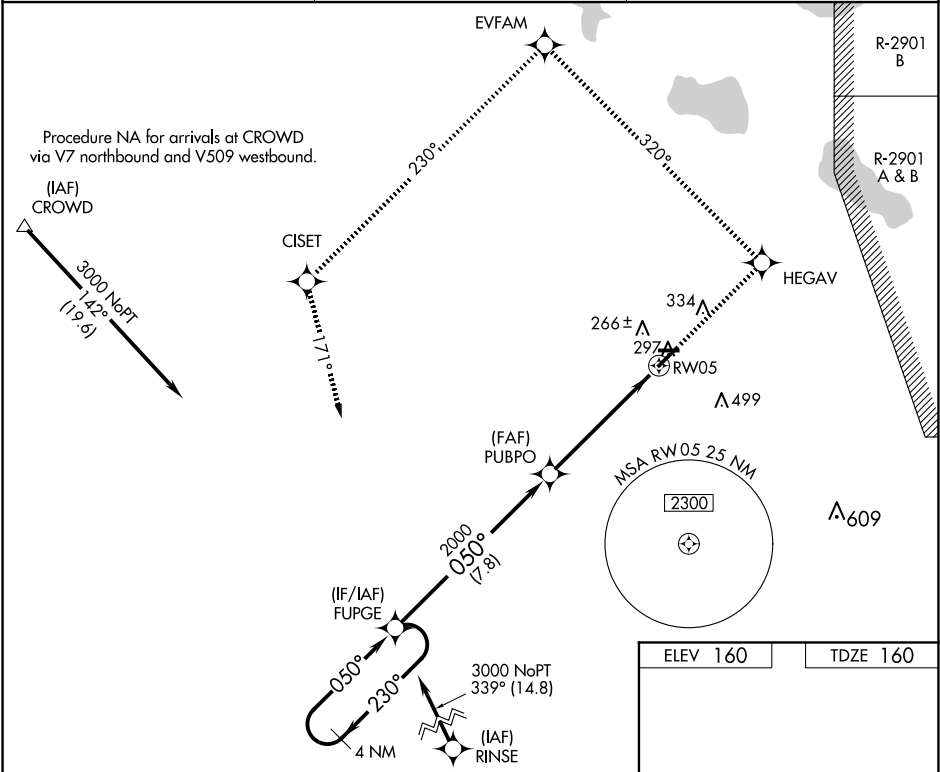
WAAS CH 86716 W05A	APP CRS 050°	Rwy Idg TDZE 160 Apt Elev 160	5374
--	------------------------	---	-------------

RNAV (GPS) RWY 5

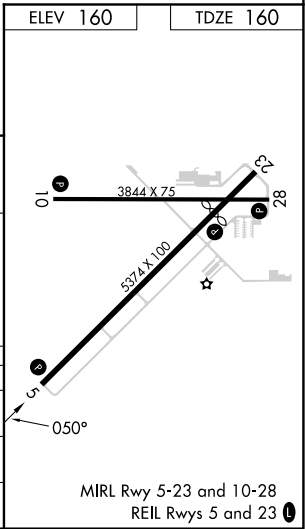
AVON PARK EXEC (AVO)

<div><div>▼</div><div>▲ NA</div></div> <div>DME/DME RNP-0.3 NA. Rwy 5, 10, 23, 28, helicopter visibility reduction below 1 SM NA. When local altimeter setting not received, use Orlando Intl altimeter setting; increase DA to 578 feet and visibility Cat A/B ½ mile. Increase all MDA 140 feet. Procedure NA at night.</div>	MISSED APPROACH: Climb to 3000 direct HEGAV and via track 320° to EVFAM and left turn via track 230° to Ciset and via track 171° to FUPGE and hold.
---	---

AWOS-3 118.725	MIAMI CENTER ★ 134.55 257.7	UNICOM 122.8 (CTAF) 0
--------------------------	---------------------------------------	---------------------------------



CATEGORY	A	B	C	D
LPV DA	450-1	290 (300-1)	NA	
LNAV MDA	540-1	380 (400-1)	NA	
CIRCLING	680-1 520 (600-1)	840-1 680 (700-1)	NA	



SE-3, 10 JUL 2025 to 07 AUG 2025

SE-3, 10 JUL 2025 to 07 AUG 2025