

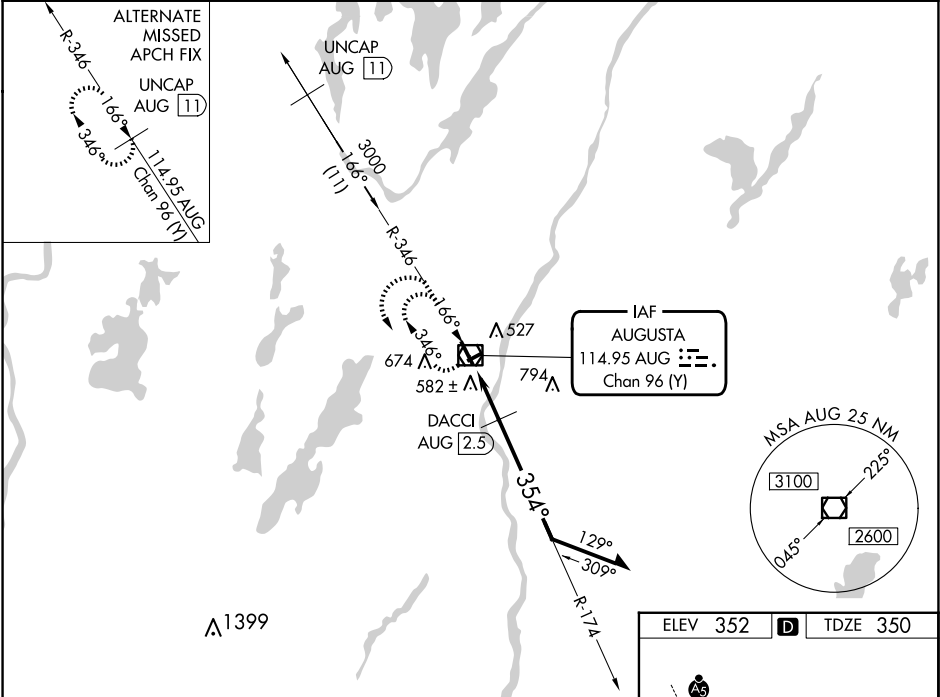
VOR/DME AUG 114.95 Chan 96 (Y)	APP CRS 354°	Rwy Idg 5002 TDZE 350 Apt Elev 352
--	------------------------	---

VOR RWY 35
AUGUSTA STATE (AUG)

⚠ Rwy 35 helicopter visibility reduction below $\frac{3}{4}$ SM NA. When local altimeter setting not received, use Waterville altimeter setting: increase all MDA 40 feet and visibility S-35 Cats C and D $\frac{1}{2}$ SM, and Circling Cat D $\frac{1}{4}$ SM; DACCI fix minimums increase visibility S-35 Cats C and D $\frac{1}{2}$ SM, and Circling Cat D $\frac{1}{4}$ SM. Circling Rwy 8, 26 NA at night.

MISSED APPROACH: Climb to 1200 on AUG VOR/DME R-346, then climbing left turn to 2300 direct AUG VOR/DME and hold.

ASOS 118.325	PORTLAND APP CON ★ 128,35 299,2	CLNC DEL 119,95 299,2	UNICOM 123.0 (CTAF) 0
------------------------	---	---------------------------------	---------------------------------



1200 ↑ AUG R-346

2300 ↘ AUG

AUG VOR/DME

174° 354°

2200

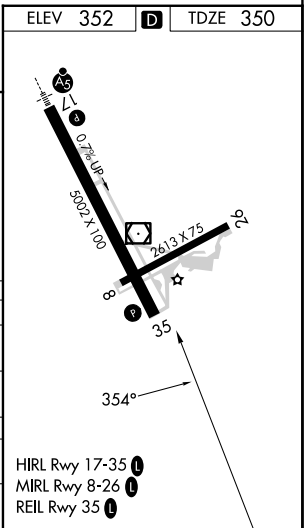
1100

0.3 1.4 0.8 NM

Remain within 10 NM

VGSI and descent angles not coincident (VGSI Angle 3.00/TCH 40).

CATEGORY	A	B	C	D
S-35	1100-1 750 (800-1)	1100-1¼ 750 (800-1¼)	1100-2	750 (800-2)
C CIRCLING	1100-1 748 (800-1)	1100-1¼ 748 (800-1¼)	1100-2¼ 748 (800-2¼)	1160-2½ 808 (900-2½)
DACCI FIX MINIMUMS				
S-35	840-1	490 (500-1)	840-1⅓	490 (500-1⅓)
C CIRCLING	960-1 608 (700-1)	980-1 628 (700-1)	980-1¾ 628 (700-1¾)	1160-2½ 808 (900-2½)



NE-1, 10 JUL 2025 to 07 AUG 2025

NE-1, 10 JUL 2025 to 07 AUG 2025