

| | | |
|--|------------------------|---|
| WAAS CH 70406 W35A | APP CRS 351° | Rwy Idg 5002 TDZE 350 Apt Elev 352 |
|--|------------------------|---|

RNAV (GPS) RWY 35
AUGUSTA STATE (AUG)

| | | |
|---|--|--|
| RNP APCH. | | <p>MISSED APPROACH: Climb to 3000 direct UCENO and left turn on track 233° to NOLL and hold.</p> |
| <p>▼ Circling to Rwy 26 NA at night. Rwy 35 helicopter visibility reduction below $\frac{3}{4}$ SM NA.</p> <p>▲ For uncompensated Baro-VNAV systems, LNAV/VNAV NA below -15°C or above 54°C.</p> | | |

| | | | |
|------------------------|---|---------------------------------|---------------------------------|
| ASOS 118.325 | PORTLAND APP CON ★ 128.35 299.2 | CLNC DEL 119.95 299.2 | UNICOM 123.0 (CTAF) 1 |
|------------------------|---|---------------------------------|---------------------------------|

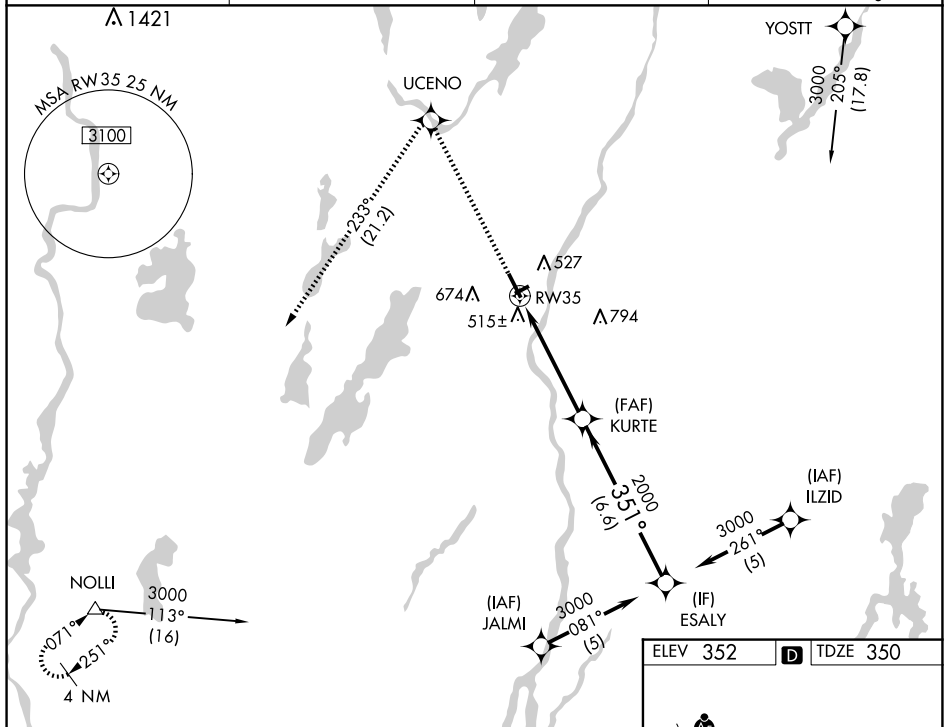


Diagram 1: RNAV Path

The diagram shows a flight path starting from a point 1.4 NM west of RW35, proceeding east for 3.6 NM to the VORTAC (KURTE), and then northeast for 6.6 NM to the destination (ESALY). The path is labeled with a bearing of 351° and an altitude of 3000 feet. A dashed line indicates the path from the start point to RW35, labeled "RW35" and "1.4 NM to RW35". The VORTAC is marked with a cross and labeled "KURTE". The destination is marked with a star and labeled "ESALY".

Table 1: Flight Data

| CATEGORY | A | B | C | D |
|----------|---------------------------|---------------------------|---------------------------|----------------------------|
| LPV DA | 610-1 260 (300-1) | | | |
| RNAV/DA | 850-1 3/4 500 (500-1 3/4) | | | |
| RNAV MDA | 840-1 490 (500-1) | | 840-1 3/8 490 (500-1 3/8) | 840-1 1/2 490 (500-1 1/2) |
| CIRCLING | 880-1 3/4 528 (600-1 3/4) | 980-1 3/4 628 (700-1 3/4) | | 1160-2 1/2 808 (900-2 1/2) |

Diagram 2: VORTAC Station

The diagram shows the VORTAC station with a bearing of 351° and an altitude of 3000 feet. The station is labeled "KURTE" and "ESALY". The bearing is labeled "351°" and the altitude is labeled "3000". The station is also labeled "GP 3.00° TCH 55".