

WAAS CH 70720 W17A	APP CRS 171°	Rwy Idg 5002 TDZE 348 Apt Elev 352
--	------------------------	---

RNAV (GPS) RWY 17

AUGUSTA STATE (AUG)

RNP APCH - GPS.

▼

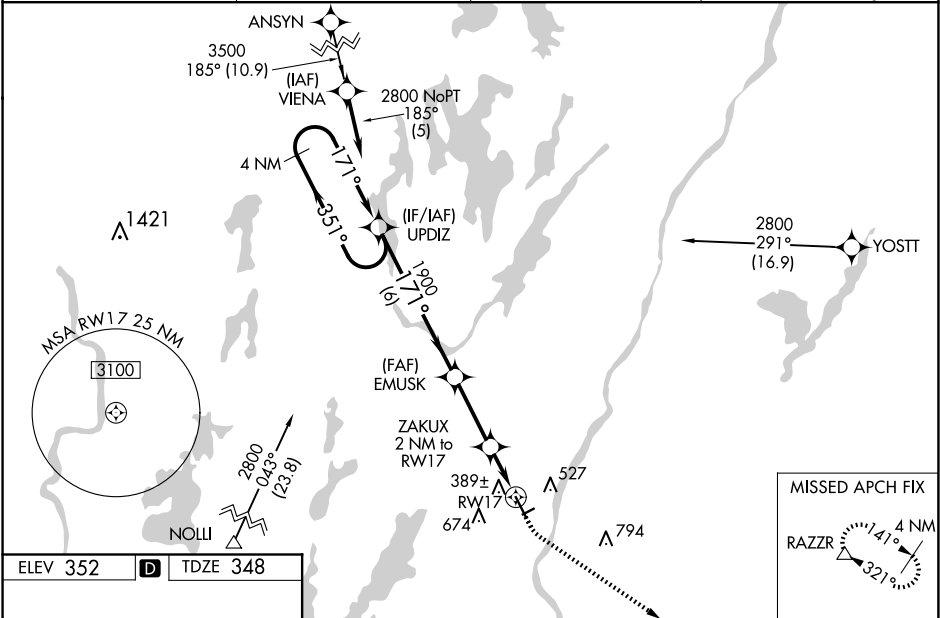
▲

For inop MALSR, increase LNAV/VNAV all Cats visibility to 1 mile. For inop MALSR when using Waterville altimeter setting, increase LNAV/VNAV all Cats visibility to 1½ mile. VDP and Baro-VNAV NA with Waterville altimeter setting. When local altimeter setting not received, use Waterville altimeter setting: increase LPV DA to 583 feet, LNAV/VNAV DA to 710 feet, and visibility LNAV/VNAV all Cats ½ SM; increase all MDA 40 feet and visibility LNAV Cats C and D ½ SM, and Circling Cat D ¼ SM. For uncompensated Baro-VNAV systems, LNAV/VNAV NA below -30°C or above 41°C. Circling Rwy 8, 26 NA at night.

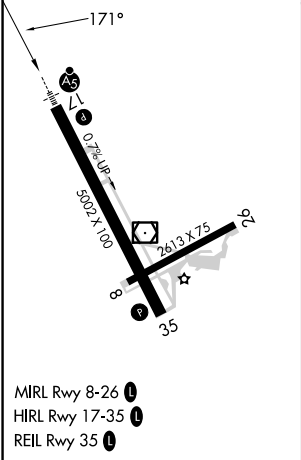
MALSR

MISSED APPROACH:
Climb to 800 then
climbing left turn to
3000 direct RAZZR
and hold.

ASOS 118.325	PORTLAND APP CON ★ 128.35 299.2	CLNC DEL 119.95 299.2	UNICOM 123.0 (CTAF) 0
------------------------	---	---------------------------------	---------------------------------



ELEV 352	D	TDZE 348
----------	----------	----------



4 NM Holding Pattern		VGSI and RNAV glidepath not coincident UPDIZ (VGSI Angle 3.00/TCH 53).		800	3000	RAZZR
2800 ← 351° 171° →		EMUSK 1900		ZAKUX 2 NM to RW17		
GP 3.00° TCH 60		1900		0.9 NM to RW17		
		1000		RW17		
		6 NM		2.8 NM		1.1 NM
						0.9
CATEGORY	A	B	C	D		
LPV DA	548-½ 200 (200-½)					
LNAV/ VNAV DA	675-5⁄8 327 (400-5⁄8)					
LNAV MDA	640-½ 292 (300-½)					
CIRCLING	960-1 608 (700-1)	980-1 628 (700-1)	980-1¾ 628 (700-1¾)	1160-2½ 808 (900-2½)		

NE-1, 10 JUL 2025 to 07 AUG 2025

NE-1, 10 JUL 2025 to 07 AUG 2025