

LOC	I-AUG	APP CRS	Rwy Idg	5002
	<b>108.7</b>	<b>171°</b>	TDZE	<b>348</b>
			Apt Elev	<b>352</b>

ILS or LOC RWY 17  
AUGUSTA STATE (AUG)

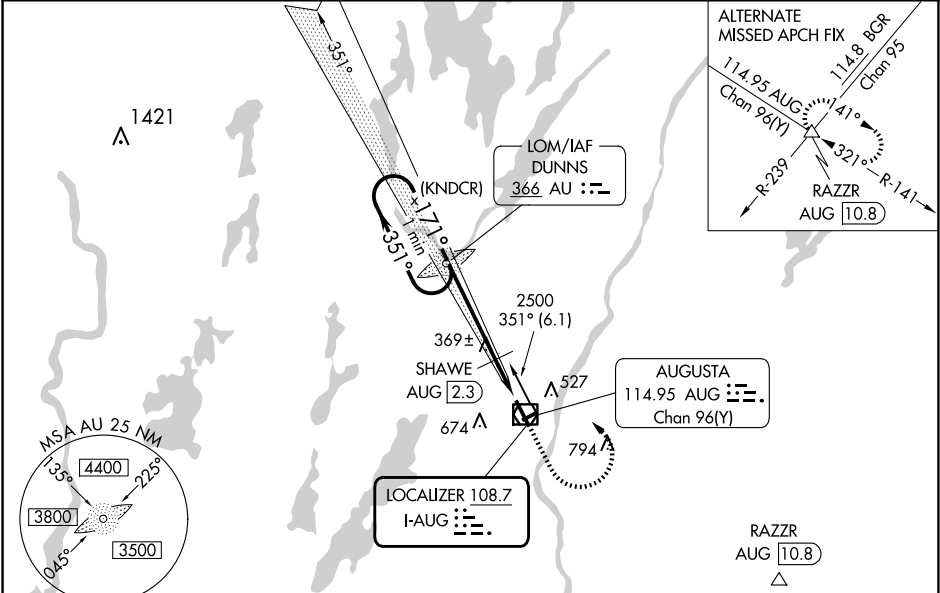
ADF required.

Localizer unusable from 0.5 NM to threshold above 1500 feet. When local altimeter setting not received, use Waterville altimeter setting: increase S-ILS 17 DA to 583; increase all MDAs 40 feet and visibility S-LOC 17 Cat C and D 1/8 SM, and Circling Cat D 1/4 SM; SHAWE fix minimums increase S-LOC 17 Cat C and D visibility 1/8 SM, and Circling Cat D visibility 1/4 SM. Glideslope unusable below 430 feet. Circling Rwy 8, 26 NA at night. # DME from AUG VOR/DME.

MALSR

MISSED APPROACH: Climb to 1000 then climbing left turn to 2500 direct DUNNS LOM and hold.

ASOS	PORTLAND APP CON ★	CLNC DEL	UNICOM
<b>118.325</b>	<b>128.35 299.2</b>	<b>119.95 299.2</b>	<b>123.0 (CTAF) 0</b>



ELEV 352 D TDZE 348				
One Minute Holding Pattern				
VGSI and ILS glidepath not coincident (VGSI Angle 3.00/TCH 53).				
AU LOM				
2500 351° 171° 2300 3.00° TCH 61				
2173 171° 900 3.9 NM 1.7 NM				
*LOC only, 940 when using Waterville altimeter setting.				
CATEGORY	A	B	C	D
S-ILS 17	548-1/2 200 (200-1/2)			
S-LOC 17	900-1/2	552 (600-1/2)	900-1 1/4	552 (600-1 1/4)
CIRCLING	940-1 588 (600-1)	980-1 628 (700-1)	980-1 3/4 628 (700-1 3/4)	1160-2 1/2 808 (900-2 1/2)
SHAWE FIX MINIMUMS #				
S-LOC 17	620-1/2 272 (300-1/2)			
CIRCLING	940-1 588 (600-1)	980-1 628 (700-1)	980-1 3/4 628 (700-1 3/4)	1160-2 1/2 808 (900-2 1/2)
HIRL Rwy 17-35 0 MRL Rwy 8-26 0 REIL Rwy 35 0				
FAF to MAP 5.6 NM				
Knots 60 90 120 150 180				
Min:Sec 5:36 3:44 2:48 2:14 1:52				