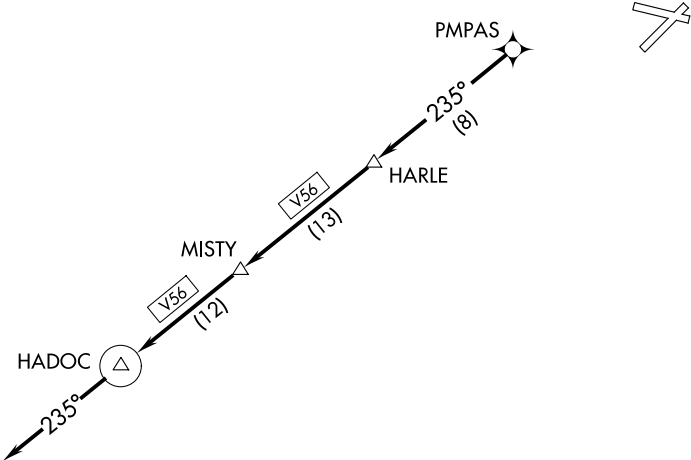


AUGUSTA DEP CON ★
126.8 270.3
CTAF
123.05

TOP ALTITUDE:
ASSIGNED BY ATC



TAKEOFF MINIMUMS

Rwys 5, 11: Standard.
Rwy 23: Standard with minimum climb of 337' per NM to 1300.
Rwy 29: Standard with minimum climb of 240' per NM to 1300.

- NOTE: RADAR and GPS required.
NOTE: RNAV 1.
NOTE: Do not exceed 250K until advised by ATC.
NOTE: For turbojet aircraft only.
NOTE: For use during Masters golf tournament week only.

NOTE: Chart not to scale.



DEPARTURE ROUTE DESCRIPTION

TAKEOFF RUNWAYS 5, 11, 23, 29: Climb on assigned heading for RADAR vectors to PMPAS. Then on depicted route to HADOC, then fly heading 235°, for RADAR vectors. Thence. . .
...maintain altitude assigned by ATC. Expect clearance to filed altitude/flight level within 10 minutes after departure.