

KAOLN SIX DEPARTURE (RNAV)

**TOP ALTITUDE:
ASSIGNED BY ATC**

NOTE: Do not exceed 250K until advised by ATC.

AUGUSTA DEP CON ★
126.8 270.3
CLINC DEL
118.65
AUGUSTA TOWER ★
118.7 (CTAF) 239.3

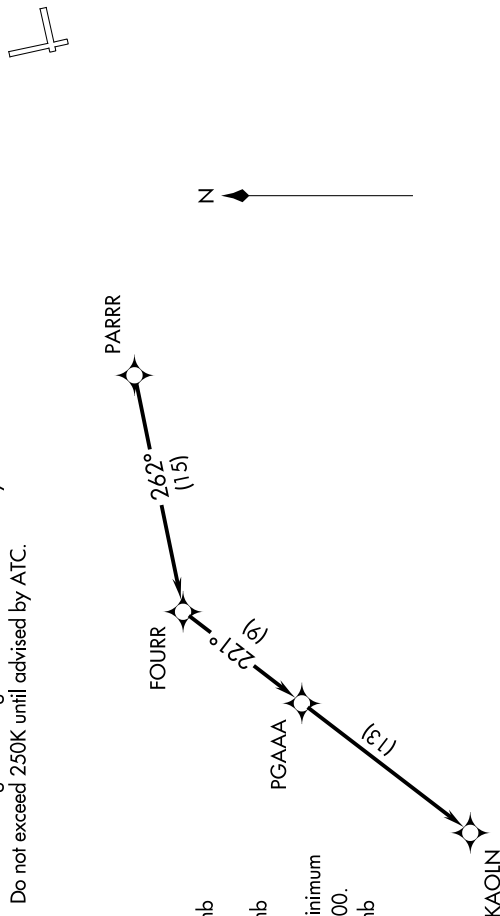
TAKEOFF MINIMUMS

Rwy 8: Standard with minimum climb of 394' per NM to 2500.

Rwy 17: Standard with minimum climb of 265' per NM to 2400.

Rwy 26: 300-1³/₄ or standard with minimum climb of 312' per NM to 2000.

Rwy 35: Standard with minimum climb of 302' per NM to 2500.



NOTE: Chart not to scale.

DEPARTURE ROUTE DESCRIPTION

TAKEOFF RUNWAYS 8, 17, 26, 35: Climb on assigned heading for RADAR vectors to PARRR, then on depicted route to KAOLN, thence. . .

... maintain altitude assigned by ATC. Expect clearance to filed altitude/flight level within 10 minutes after departure.

SE-4, 10 JUL 2025 to 07 AUG 2025

KAOLN SIX DEPARTURE (RNAV)

(KAOLN6.KAOLN) 28FEB19

AUGUSTA, GEORGIA
AUGUSTA RGNL AT BUSH FLD (AGS)