

LOC I-MZX	APP CRS	Rwy Ldg
111.75	172°	8001
		TDZE 146
		Apt Elev 146

ILS or LOC RWY 17
AUGUSTA RGNL AT BUSH FLD (AGS)

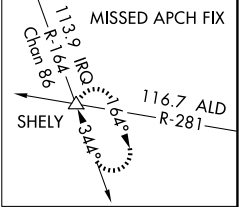
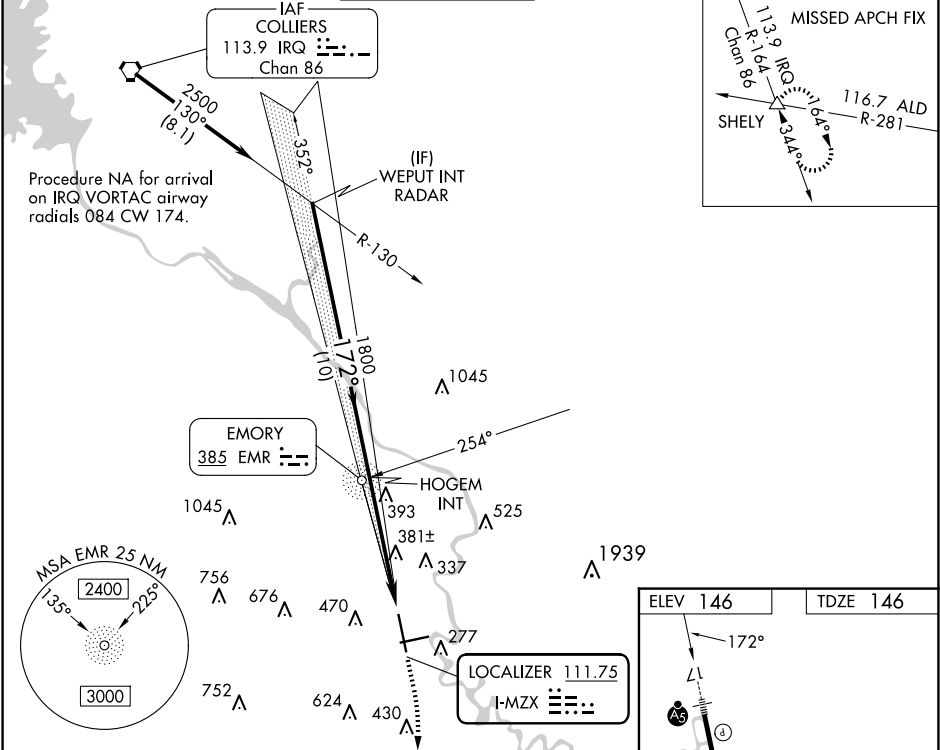
ADF required for LOC only.

For inop ALS, increase S-LOC 17 Cats C and D visibility to 1½ SM.

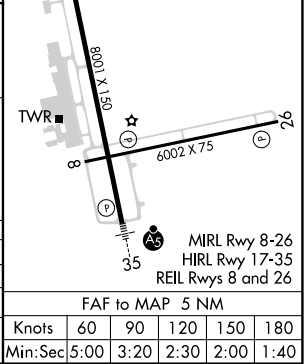
MALSRL

MISSED APPROACH: Climb to 3000 on heading 180° and IRQ VORTAC R-164 to SHELLY INT and hold.

ATIS	AUGUSTA APP CON ★	AUGUSTA TOWER ★	GND CON	CLNC DEL	UNICOM
132.75	126.8 270.3	118.7 (CTAF) 239.3	121.9 348.6	118.65	122.95



VGSI and ILS glidepath not coincident (VGSI Angle 3.00/TCH 71).				
WEPUT INT RADAR		HOGEM INT		
2500		1800		
GS 3.00° TCH 57		172°		
10 NM		5 NM		
CATEGORY	A	B	C	D
S-ILS 17	351/24 205 (300-½)			
S-LOC 17	640/24	494 (500-½)	640/50	494 (500-1)
CIRCLING	780-1	634 (700-1)	780-1¾ 634 (700-1¾)	940-2½ 794 (800-2½)



SE-4, 10 JUL 2025 to 07 AUG 2025

SE-4, 10 JUL 2025 to 07 AUG 2025