

SMLTZ THREE DEPARTURE (RNAV)

AL-26 (FAA)

TOP ALTITUDE:
10000

RNAV 1 - DME/DME/IRU or GPS.

RADAR required for non-GPS equipped aircraft.

GND CON

121.9 254.4 (Rwys 8L-26R, 8R-26L)

121.75 254.4 (Rwys 9L-27R, 9R-27L)

121.65 254.4 (Rwy 10-28)

ATLANTA TOWER

119.1 254.4 (Rwy 8L-26R)

125.325 254.4 (Rwy 8R-26L)

119.3 254.4 (Rwy 9R-27L)

123.85 254.4 (Rwy 9L-27R)

119.5 254.4 (Rwy

ATLANTA DEP CON

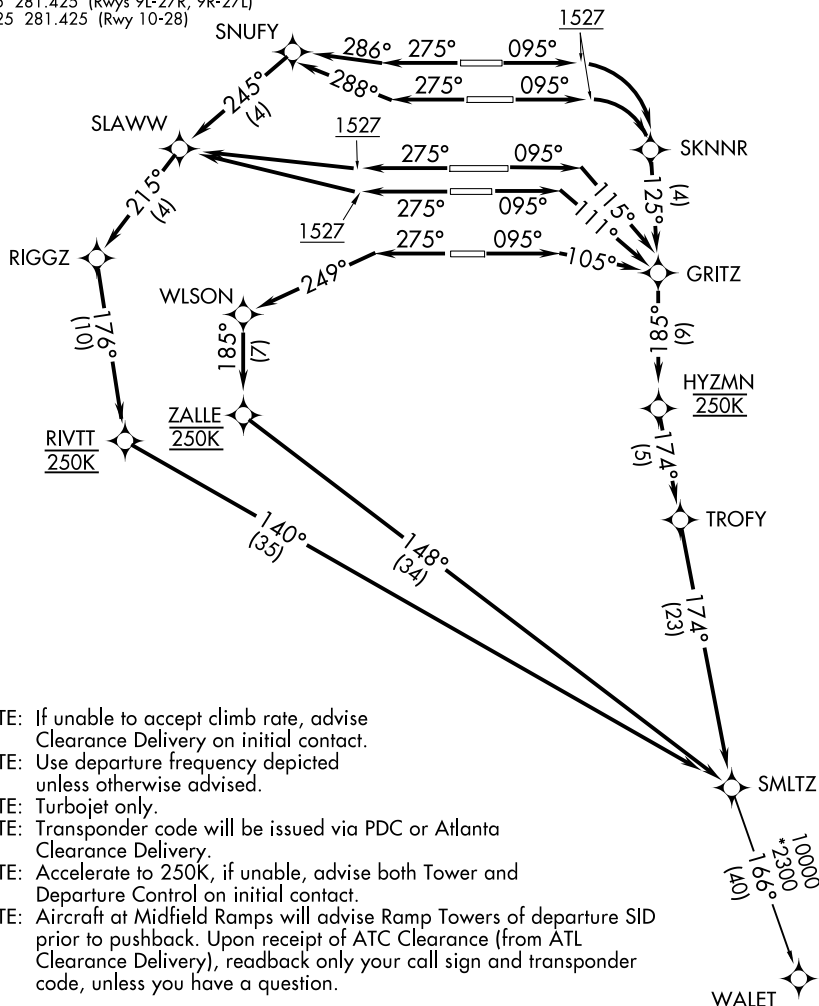
133.475 281.425 (Rwys 8L-26R, 8R-26L)

125.65 281.425 (Rwys 9L-27R, 101.005 201.425 (Rwys 10-20)

TAKEOFF MINIMUMS:

Rwys 8L/R, 9L/R, 10, 26L/R, 27L/R, 28:

Standard with minimum climb of 500' per NM to 1527.



NOTE: If unable to accept climb rate, advise Clearance Delivery on initial contact.

NOTE: Use departure frequency depicted unless otherwise advised.

NOTE: Turbojet only.

NOTE: Transponder code will be issued via PDC or Atlanta Clearance Delivery.

NOTE: Accelerate to 250K, if unable, advise both Tower and Departure Control on initial contact.

NOTE: Aircraft at Midfield Ramps will advise Ramp Towers of departure SID prior to pushback. Upon receipt of ATC Clearance (from ATL Clearance Delivery), readback only your call sign and transponder code, unless you have a question.

(CONTINUED ON FOLLOWING PAGE)

NOTE: Chart not to scale.

SMLTZ THREE DEPARTURE (RNAV)

(SMLTZ3.SMLTZ) 19MAY22

ATLANTA, GEORGIA

HARTSFIELD/JACKSON ATLANTA INTL(ATL)

SE-4, 10 JUL 2025 to 07 AUG 2025