

WAAS CH 61000 W26B	APP CRS 275°	Rwy Idg TDZE 990 Apt Elev 1026
--	------------------------	--

RNAV (GPS) Y RWY 26R

HARTSFIELD/JACKSON ATLANTA INTL (ATL)

▼

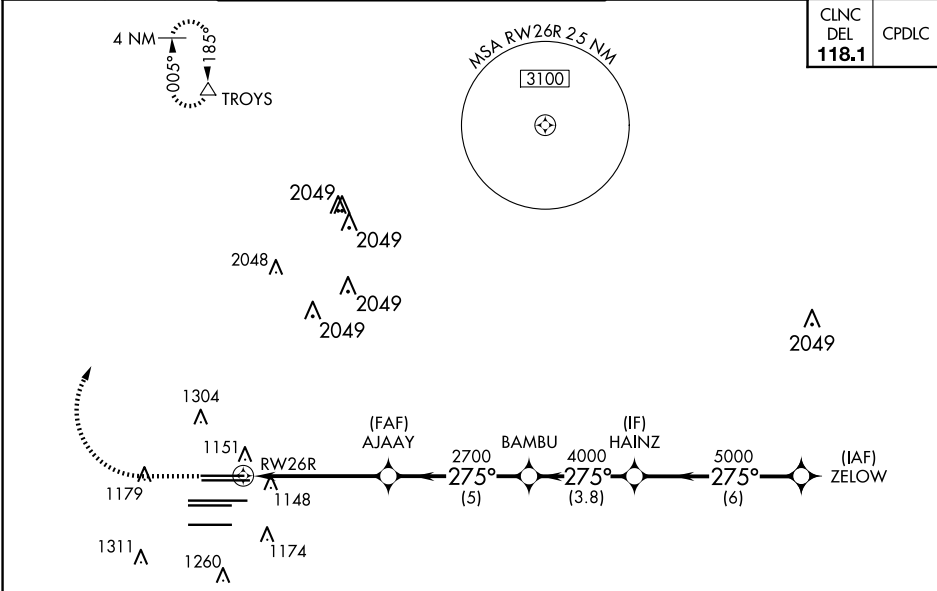
For uncompensated Baro-VNAV systems, LNAV/VNAV NA below -7°C (20°F) or above 54°C (130°F). DME/DME RNP-0.3 NA. Simultaneous approach authorized with Rwy 27R or 27L or 28, or Rwys 27R and 28. LNAV procedure NA during simultaneous operations. Use of FD or AP providing RNAV track guidance required during simultaneous operations.

MALSR

MISSED APPROACH:

Climb to 1500 then climbing right turn to 3500 direct TROYS and hold.

D-ATIS ARR 119.65 DEP 125.55	ATLANTA APP CON 127.9 379.9	ATLANTA TOWER 8L-26R 8R-26L 9L-27R 9R-27L 10-28 RWYS 119.1 125.325 123.85 119.3 119.5 254.4					ALL RWYS 121.9	GND CON (8L-26R,8R-26L) (9L-27R,9R-27L) 10-28 121.75 121.65 254.4	ALL RWYS
--	--	--	--	--	--	--	-----------------------------	--	-------------



ELEV 1026	D	TDZE 990
-----------	----------	----------

RADAR REQUIRED

HIRL all Rwys
TDZ/CL Rwys 8L, 9R, 10, 26R, 27L and 28

1500 3500 TROYS

VGSI and RNAV glidepath not coincident (VGSI Angle 3.00°/TCH 69°)

HAINZ ZELOW

*LNAV only.

*1.3 NM to RW26R

RW26R

2700 4000 5000

275° 275°

GP 3.00° TCH 55

1.3 3.9 NM 5 NM 3.8 NM 6 NM

CATEGORY	A	B	C	D
LPV DA	1190/18		200 (200-½)	
LNAV/VNAV DA	1426/50		436 (500-1)	
LNAV MDA	1460/24	470 (500-½)	1460/50	470 (500-1)