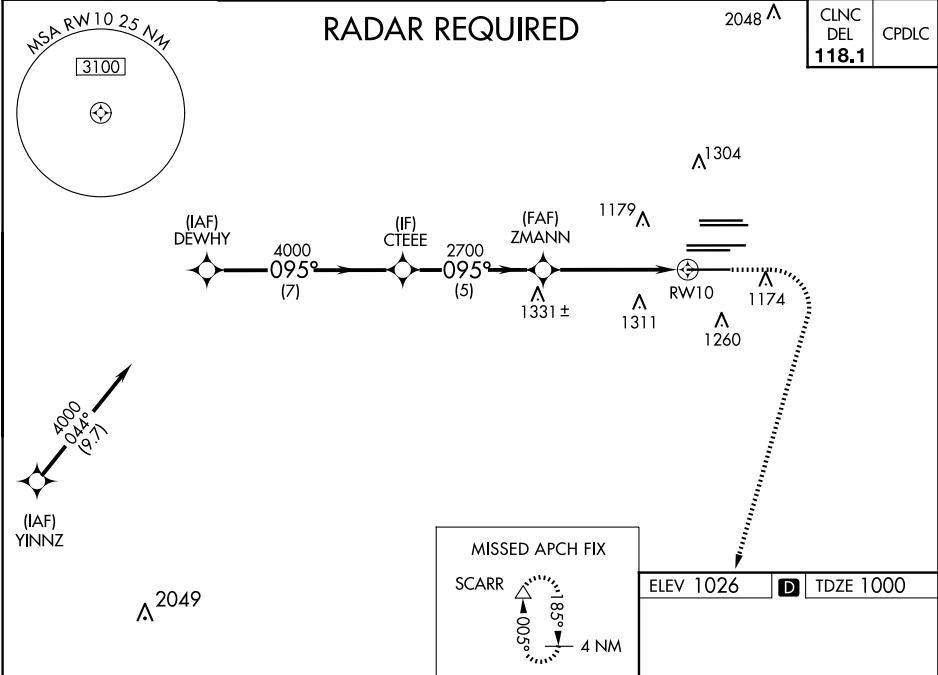


WAAS CH 40399 W10A	APP CRS 095°	Rwy Idg TDZE 1000 Apt Elev 1026
--	------------------------	---

RNAV (GPS) Y RWY 10
HARTSFIELD/JACKSON ATLANTA INTL (ATL)

▼ For uncompensated Baro-VNAV systems, LNAV/VNAV NA below -7°C (20°F) or above 54°C (130°F). DME/DME-0.3 RNP NA. For inop ALSF-2, increase LNAV/VNAV all Cats visibility to 1½ mile and LNAV Cats C and D visibility to 1¾ mile. LNAV procedure NA during simultaneous operations. Simultaneous approach authorized with Rwy 8L or 8R or 9L, or Rwy 8L and 9L. Use of FD or AP providing RNAV track guidance required during simultaneous operations.		ALSF-2 	MISSED APPROACH: Climb to 1500 then climbing right turn to 3000 direct SCARR and hold.
D-ATIS ARR 119.65 DEP 125.55	ATLANTA APP CON 127.9 379.9	ATLANTA TOWER 8L-26R 8R-26L 9L-27R 9R-27L 10-28 RWYS 119.1 125.325 123.85 119.3 119.5 254.4	ALL GND CON ALL RWYS 121.75 121.65 254.4



DEWHY		CTEEE	ZMANN	RWY 10
4000		4000	2700	1026
GP 3.00° TCH 55				
7 NM		5 NM	3.9 NM	1.3 NM
CATEGORY	A	B	C	D
LPV DA		1200/18	200 (200-½)	
LNAV/VNAV DA		1455/55	455 (500-1)	
LNAV MDA	1480/24	480 (500-½)	1480/50	480 (500-1)

RNAV (GPS) Y RWY 10

DEWHY CTEEE ZMANN RWY 10

4000 4000 2700 1026

GP 3.00° TCH 55

7 NM 5 NM 3.9 NM 1.3 NM

CATEGORY A B C D

LPV DA 1200/18 200 (200-½)

LNAV/VNAV DA 1455/55 455 (500-1)

LNAV MDA 1480/24 480 (500-½) 1480/50 480 (500-1)

RNAV (GPS) Y RWY 10

DEWHY CTEEE ZMANN RWY 10

4000 4000 2700 1026

GP 3.00° TCH 55

7 NM 5 NM 3.9 NM 1.3 NM

CATEGORY A B C D

LPV DA 1200/18 200 (200-½)

LNAV/VNAV DA 1455/55 455 (500-1)

LNAV MDA 1480/24 480 (500-½) 1480/50 480 (500-1)