

25051

Rwy Idg	9000
TDZE	1000
Apt Elev	1026

RNAV (RNP) Z RWY 10
HARTSFIELD/JACKSON ATLANTA INTL (ATL)

T For uncompensated Baro-VNAV systems, procedure NA below -8°C (18°F) or above 54°C (130°F). GPS required. Simultaneous approach authorized; arrival from ROBNS NA. For inop ALS, increase RNP 0.11 DA all Cats visibility to RVR 4500.

ALSF-2

MISSED APPROACH: Climb to 1500 then climbing right turn to 3000 direct SCARR and hold.

D-ATIS
ARR 119.65
DEP 125.55

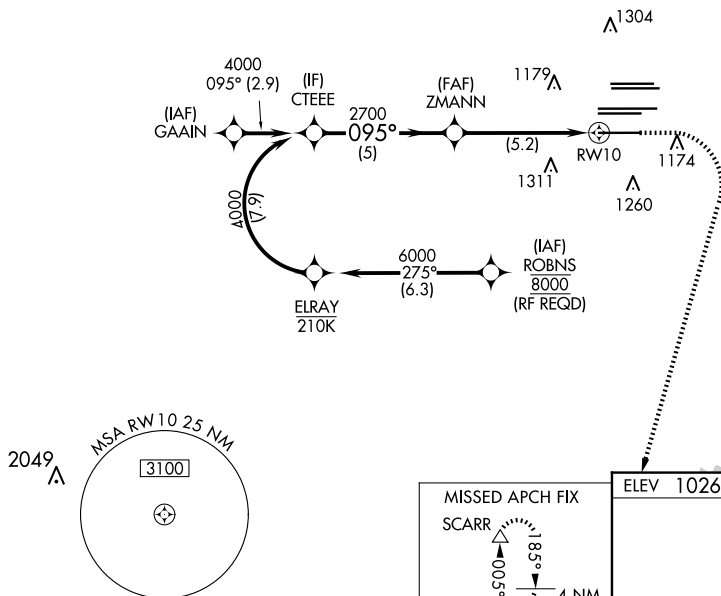
ATLANTA
APP CON
27.9 379.9

ATLANTA TOWER					ALL
8L-26R	8R-26L	9L-27R	9R-27L	10-28	RWYS
119.1	125.325	123.85	119.3	119.5	254.4

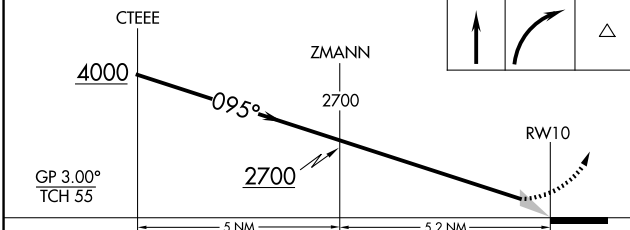
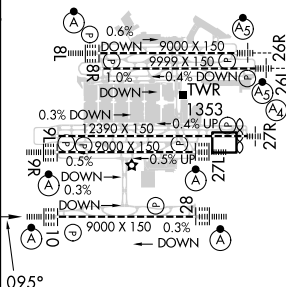
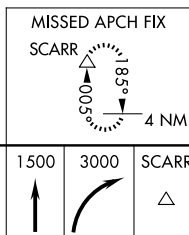
	GND CON		ALL
(8L-26R,8R-26L)	(9L-27R,9R-27L)	10-28	RWYS
121.9	121.75	121.65	254.4

$$2049 \Delta$$
CLNC
DEL
118.1

CPDLC



ELEV	1026	D	TDZE	1000
------	------	----------	------	------



CATEGORY	A	B	C	D
RNP 0.11 DA		1290/24	290 (300-1/2)	
RNP 0.30 DA		1456/50	456 (500-1)	

AUTHORIZATION REQUIRED

HIRL all Rwy's
TDZ/CL Rwy's 8L, 9R,
10, 26R, 27L and 28

ATLANTA, GEORGIA
Amdt 1 12OCT17

HARTSFIELD/JACKSON ATLANTA INTL (ATL)
33°38'N-84°26'W **RNAV (RNP) Z RWY 10**