

ATLANTA, GEORGIA

AL-26 (FAA)

# RNAV (GPS) PRM Y RWY 10 (SIMULTANEOUS CLOSE PARALLEL) HARTSFIELD/JACKSON ATLANTA INTL (ATL)

WAAS CH <b>40399</b> <b>W10A</b>	APP CRS <b>095°</b>	Rwy Idg TDZE <b>1000</b> Apt Elev <b>1026</b>
--	------------------------	---

For uncompensated Baro-VNAV systems, LNAV/VNAV NA below -7°C (20°F) or above 54°C (130°F). DME/DME RNP-0.3 NA. For inop ALSF-2, increase LNAV/VNAV all Cats visibility to 1½ mile. Simultaneous close parallel approach authorized with ILS PRM and RNAV PRM Rwy 8L or 8R or 9L or 9R, or Rwy 8L and 9L, or Rwy 8L and 9R, or Rwy 8R and 9L, or Rwy 8R and 9R. See additional requirements on AAUP. Dual VHF comm required. Use of FD or AP providing RNAV track guidance required during simultaneous operations.



MISSED APPROACH:  
Climb to 1500 then  
climbing right turn to  
3000 direct SCARR  
and hold.

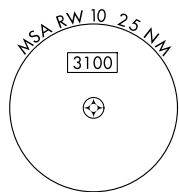
D-ATIS ARR <b>119.65</b> DEP <b>125.55</b>	ATLANTA APP CON <b>127.9 379.9</b>	ATLANTA TOWER 8L-26R 8R-26L 9L-27R 9R-27L 10-28 RWYS <b>119.1 125.325 123.85 119.3 119.5 254.4</b> <b>PRM 133.425</b>	ALL RWYS <b>121.9 121.75 121.65 254.4</b>
--	--	--	---

2048  $\Delta$

CLNC  
DEL  
**118.1**

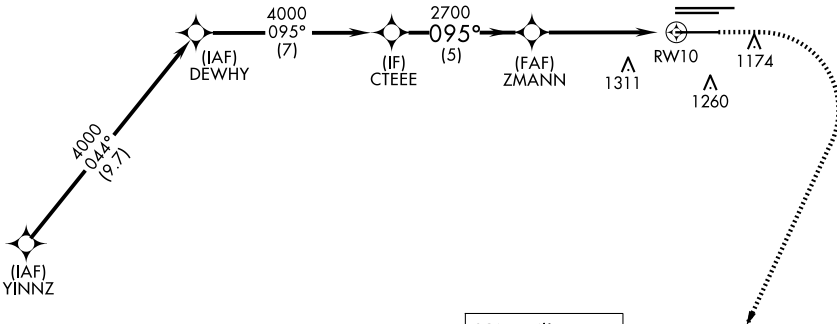
CPDLC

2049  $\Delta$



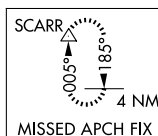
1304  $\Delta$

1179  $\Delta$



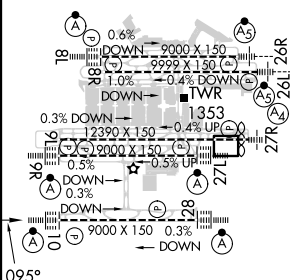
2049  $\Delta$

RADAR REQUIRED



ELEV 1026 **D** TDZE 1000

	DEWHY	CTEEE	ZMANN	RW10
	4000	4000	2700	
	GP 3.00° TCH 55			
	7 NM	5 NM	5.2 NM	
CATEGORY	A	B	C	D
LPV DA		1200/18	200 (200-½)	
LNAV/VNAV DA		1455/55	455 (500-1)	



095°

HIRL all Rwy's  
TDZ/CL Rwy's 8L, 9R, 10, 26R,  
27L and 28

ATLANTA, GEORGIA  
Orig-A 12OCT17

33°38'N-84°26'W

HARTSFIELD/JACKSON ATLANTA INTL (ATL)

## RNAV (GPS) PRM Y RWY 10 (SIMULTANEOUS CLOSE PARALLEL)