

ATLANTA, GEORGIA

AL-26 (FAA)

25051

RNAV (GPS) PRM RWY 27L
(SIMULTANEOUS CLOSE PARALLEL)
HARTSFIELD/JACKSON ATLANTA INTL (ATL)

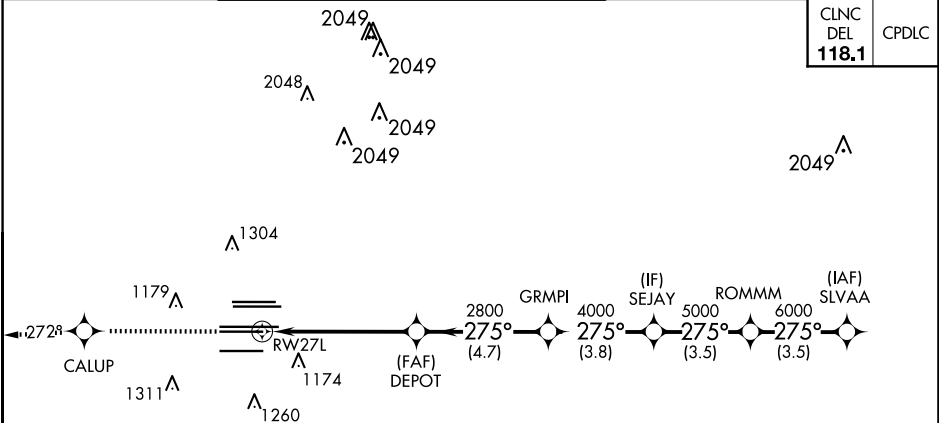
WAAS CH 65700 W27A	APP CRS 275°	Rwy Idg 8865 TDZE 999 Apt Elev 1026
--	------------------------	--

For uncompensated Baro-VNAV systems, LNAV/VNAV NA below -7°C (20°F) or above 54°C (130°F). DME/DME RNP-0.3 NA. Simultaneous close parallel approach authorized with ILS PRM and RNAV PRM Rwy 26R or 26L or 28, or Rwys 26R and 28, or Rwys 26L and 28. Dual VHF Comm required. Use of FD or AP providing RNAV track guidance required during simultaneous operations. See additional requirements on AAUP.

ALSF-2

MISSED APPROACH: Climb to 4000 direct CALUP and on track 272° to TEMPO and hold.

D-ATIS ARR 119.65 DEP 125.55	ATLANTA APP CON 127.9 379.9	ATLANTA TOWER 8L-26R 8R-26L 9L-27R 9R-27L 10-28 RWYS 119.1 125.325 123.85 119.3 119.5 254.4 PRM 132.55	ALL RWYS 121.9 121.75 121.65 254.4
--	--	---	---

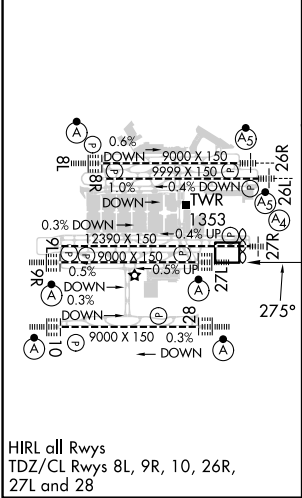


MISSED APCH FIX

TEMPO

4 NM

ELEV 1026	D	TDZE 999
------------------	----------	-----------------



ATLANTA, GEORGIA
Orig-A 12OC17

RADAR REQUIRED

VGSI and RNAV glidepath not coincident (VGSI Angle 3.00/TCH 79).

SLVAA 7000

GP 3.00° TCH 58

CATEGORY	A	B	C	D
LPV DA	1199/18 200 (200-½)			
LNAV/VNAV DA	1528-1⅓ 529 (600-1⅓)			

33°38'N-84°26'W

HARTSFIELD/JACKSON ATLANTA INTL (ATL)

RNAV (GPS) PRM RWY 27L (SIMULTANEOUS CLOSE PARALLEL)

SE-4, 10 JUL 2025 to 07 AUG 2025

SE-4, 10 JUL 2025 to 07 AUG 2025