

ATLANTA, GEORGIA

AL-26 (FAA)

25051

WAAS CH <b>97400</b> <b>W09B</b>	APP CRS <b>095°</b>	Rwy Idg TDZE <b>1026</b> Apt Elev <b>1026</b>
--	------------------------	---

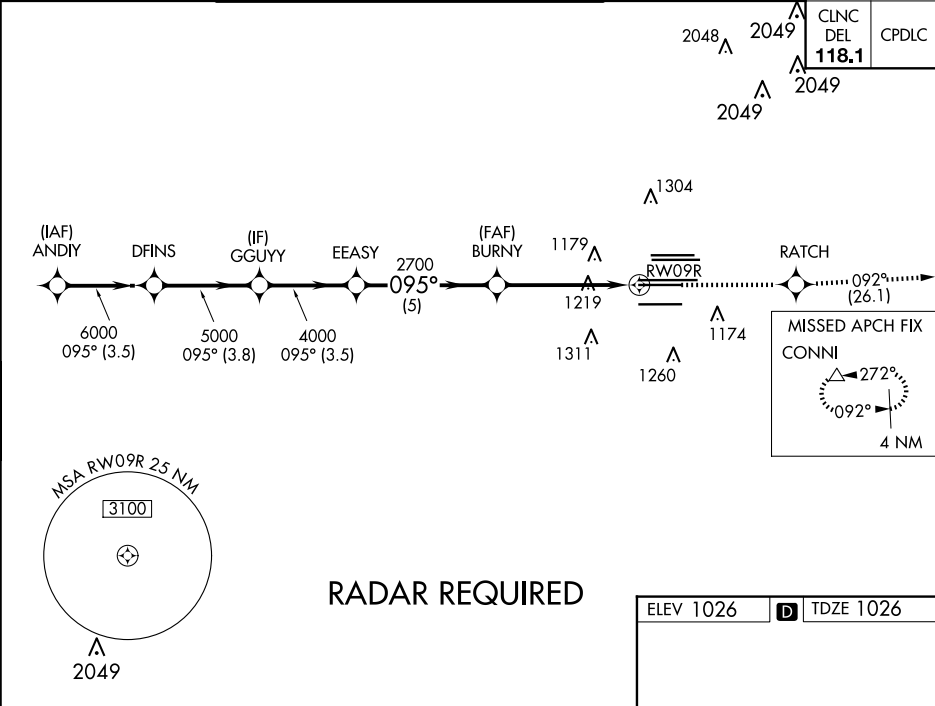
RNAV (GPS) RWY 9R  
HARTSFIELD/JACKSON ATLANTA INTL (ATL)

**▽** For uncompensated Baro-VNAV systems, LNAV/VNAV NA below -7°C (20°F) or above 54°C (130°F). DME/DME RNP-0.3 NA. Simultaneous approach authorized with Rwy 8L or 8R. LNAV procedure NA during simultaneous operations. Use of FD or AP providing RNAV track guidance required during simultaneous operations.

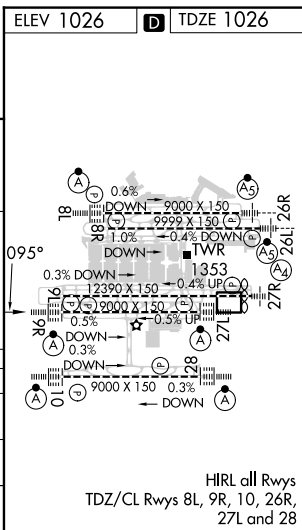
ALSf-2

MISSED APPROACH: Climb to 4000 direct RATCH and on track 092° to CONNI and hold.

D-ATIS ARR <b>119.65</b>	ATLANTA APP CON	ATLANTA TOWER						ALL RWYS	GND CON	ALL RWYS
DEP <b>125.55</b>	<b>127.9 379.9</b>	<b>119.1</b>	<b>125.325</b>	<b>123.85</b>	<b>119.3</b>	<b>119.5</b>	<b>254.4</b>	<b>121.9</b>	<b>121.75</b>	<b>121.65 254.4</b>
		8L-26R	8R-26L	9L-27R	9R-27L	10-28		(8L-26R, 8R-26L)	(9L-27R, 9R-27L)	10-28



VGSi and RNAV glidepath not coincident (VGSi Angle 3.00/TCH 70).		4000	RATCH	tr 092°	CONNI
ANDYI		DFINS	GGUY	EEASY	BURNY
7000		6000	5000	4000	2700
GP 3.00° TCH 56					
3.5 NM		3.8 NM	3.5 NM	5 NM	3.9 NM
CATEGORY		A	B	C	D
LPV DA			1226/18	200 (200-½)	
LNAV/VNAV DA			1403/40	377 (500-¾)	
LNAV MDA		1480/24	454 (500-½)	1480/45	454 (500-⅞)



ATLANTA, GEORGIA  
Amdt 4B 12OCT17

HARTSFIELD/JACKSON ATLANTA INTL (ATL)  
33°38'N-84°26'W  
RNAV (GPS) RWY 9R

SE-4, 10 JUL 2025 to 07 AUG 2025

SE-4, 10 JUL 2025 to 07 AUG 2025