

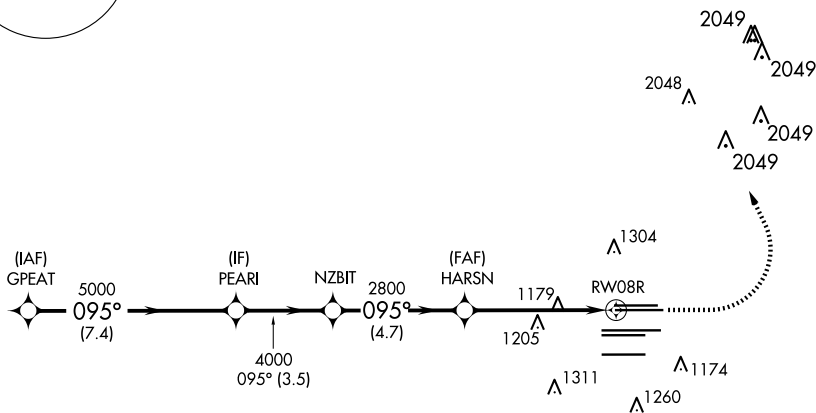
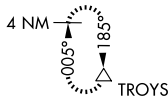
25051

RNAV (GPS) RWY 8R  
HARTSFIELD/JACKSON ATLANTA INTL (ATL)

**MISSED APPROACH:**  
Climb to 1500 then  
climbing left turn to  
3500 direct TROYS  
and hold.

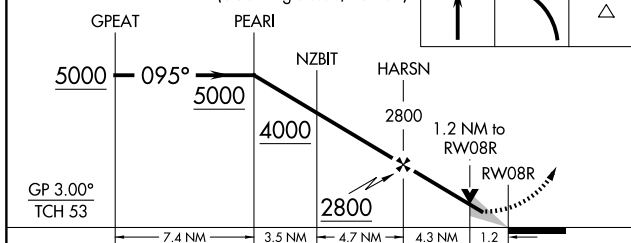
**T** For uncompensated Baro-VNAV systems, LNAV/VNAV NA below -5°C or above 54°C. Simultaneous approach authorized with Rwy 9L or 9R or 10. LNAV procedure NA during simultaneous operations. Use of FD or AP providing RNAV track guidance required during simultaneous operations.

CLNC DEL <b>118,1</b>	CPDLC
-----------------------------	-------

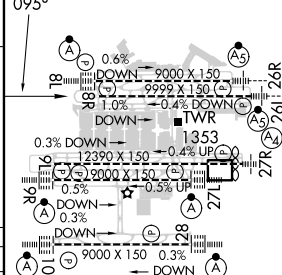


ELEV	1026	<b>D</b>	TDZE	1024
------	------	----------	------	------

1500	3500	TROYS
------	------	-------



CATEGORY		A	B	C	D
LPV	DA	1282/40 258 (300-3 <sub>4</sub> )			
LNNAV/ VNAV	DA	1440/60 416 (500-1 <sub>4</sub> )			
LNNAV	MDA	1460/55	436 (500-1)	1460-1 <sub>4</sub>	436 (500-1 <sub>4</sub> )



HIRL all Rwys  
TDZ/CL Rwys 8L, 9R,  
10, 26R, 27L and 28

HARTSFIELD/JACKSON ATLANTA INTL (ATL)

RNAV (GPS) RWY 8R