
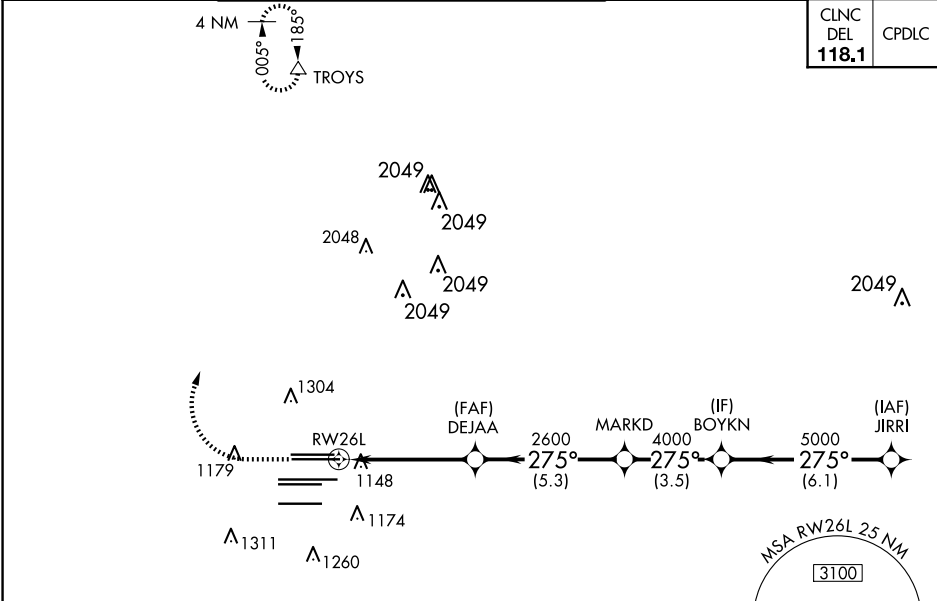


WAAS CH 56300 W26A	APP CRS 275°	Rwy Idg 9999 TDZE 996 Apt Elev 1026
--	------------------------	--

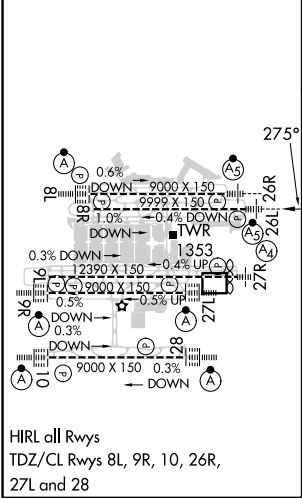
RNAV (GPS) RWY 26L
HARTSFIELD/JACKSON ATLANTA INTL (ATL)

▼ For uncompensated Baro-VNAV systems, LNAV/VNAV NA below -7°C (20°F) or above 54°C (130°F). DME/DME RNP-0.3 NA. For inop MALSR, increase LPV alt Cats visibility to RVR 4500, LNAV/VNAV all Cats visibility to RVR 6000. Simultaneous approach authorized with Rwy 27L or 27R or 28. LNAV procedure NA during simultaneous operations. Use of FD or AP providing RNAV track guidance required during simultaneous operations.	MALSR 	MISSED APPROACH: Climb to 1500 then climbing right turn to 3500 direct TROYS and hold.
---	--	---




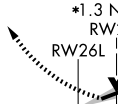

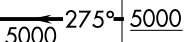
D-ATIS ARR 119.65 DEP 125.55	ATLANTA APP CON 127.9 379.9	ATLANTA TOWER 8L-26R 119.1 8R-26L 125.325 9L-27R 123.85 9R-27L 119.3 10-28 RWYS 119.5 254.4	ALL 121.9	GND CON 121.75	ALL 121.65 254.4
--	---	--	---------------------	--------------------------	-----------------------------------



ELEV 1026	D	TDZE 996
-----------	----------	----------



RADAR REQUIRED

1500	3500	TROYS	VGSI and RNAV glidepath not coincident (VGSI Angle 3.00°/TCH 63).			
			BOYKN		JIRRI	
*LNAV only.			DEJAA	MARKD		
*1.3 NM to RW26L			2600	4000	275° 5000	
						
1.3			3.6 NM	5.3 NM	3.5 NM	6.1 NM
CATEGORY	A		B		C	D
LPV	DA	1281/24		285 (300-½)		
LNAV/ VNAV	DA	1360/35		364 (400-⅝)		
LNAV MDA	1460/24		464 (500-½)		1460/50	464 (500-1)