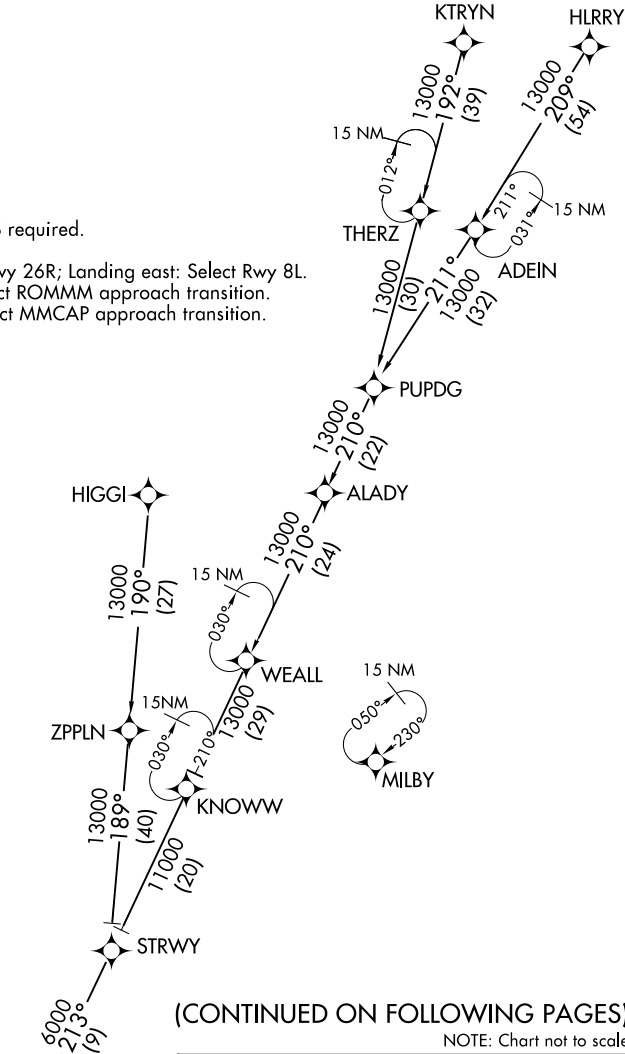


D-ATIS ARR
119.65
ATLANTA APP CON
128.525 379.9

- NOTE: RADAR required.
NOTE: RNAV 1.
NOTE: DME/DME/IRU or GPS required.
NOTE: Turbojet aircraft only.
NOTE: Landing west: Select Rwy 26R; Landing east: Select Rwy 8L.
NOTE: Landing Rwy 27L: Select ROMMM approach transition.
NOTE: Landing Rwy 27R: Select MMCAP approach transition.



- HIGGI TRANSITION (HIGGI.ONDRE1):
For TYS departures or assigned by ATC only.
HLRRY TRANSITION (HLRRY.ONDRE1)
KTRYN TRANSITION (KTRYN.ONDRE1)
PUPDG TRANSITION (PUPDG.ONDRE1)
STRWY TRANSITION (STRWY.ONDRE1)