

ILS PRM RWY 9R (SA CAT I)
(CLOSE PARALLEL)

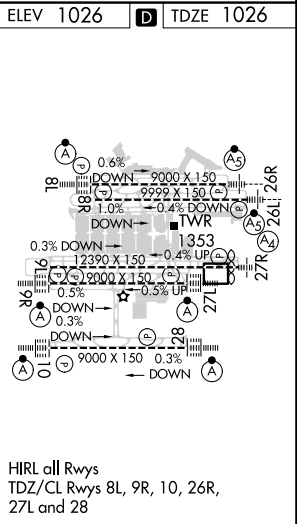
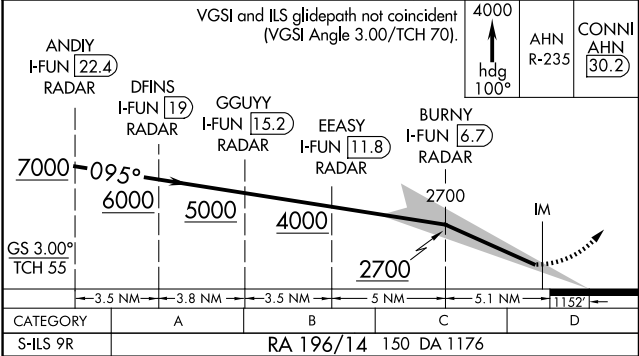
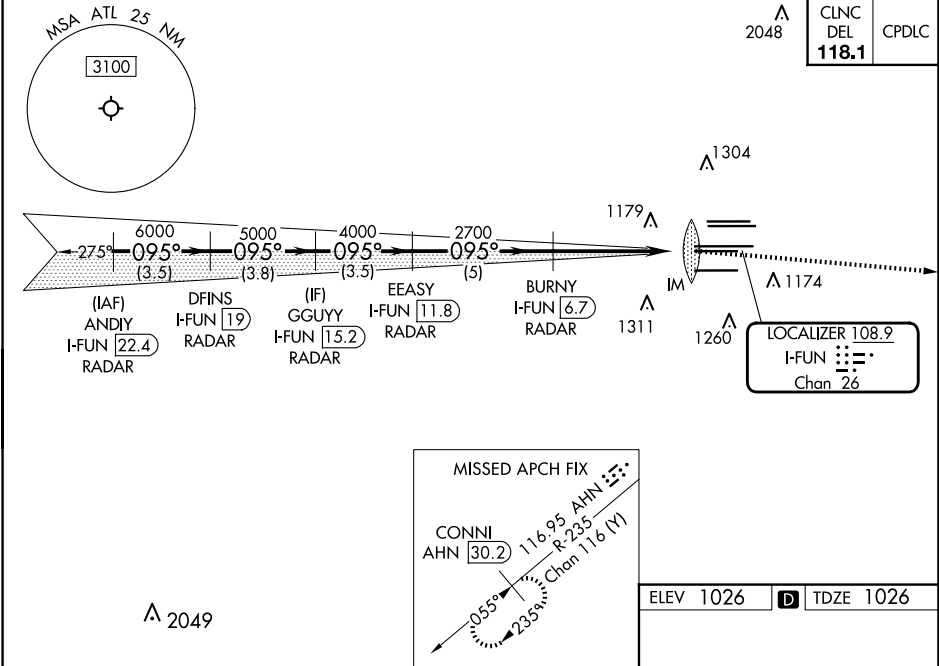
HARTSFIELD/JACKSON ATLANTA INTL (ATL)

LOC/DME I-FUN 108.9 Chan 26	APP CRS 095°	Rwy Idg 9000 TDZE 1026 Apt Elev 1026
---	------------------------	---

RADAR required for procedure entry, DME.
Requires specific OPSPEC, MSPEC, or LOA approval.
Simultaneous approach authorized. Use of FD or AP required during simultaneous operations. Dual VHF comm required.
See additional requirements on AAUP.

ALSIF-2
MISSED APPROACH: Climb to 4000 on heading 100° and AHN VOR/DME R-235 to CONNI/AHN 30.2 DME and hold.

D-ATIS ARR 119.65 DEP 125.55	ATLANTA APP CON 127.9 379.9	ATLANTA TOWER 8L-26R 8R-26L 9L-27R 9R-27L 10-28 RWYS 119.1 125.325 123.85 119.3 119.5 254.4 PRM 132.55	ALL (8L-26R,8R-26L) (9L-27R,9R-27L) 10-28 RWYS 121.9 121.75 121.65 254.4
--	--	---	---



**SA CATEGORY I ILS - SPECIAL AIRCREW
& AIRCRAFT CERTIFICATION REQUIRED**

HIRL all Rwy's
TDZ/CL Rwy's 8L, 9R, 10, 26R,
27L and 28