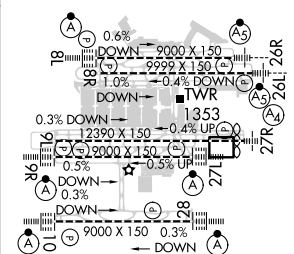
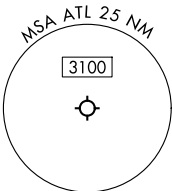


25051

	GND CON		ALL
(8L-26R,8R-26L)	(9L-27R,9R-27L)	10-28	RWYS
121.9	121.75	121.65	254.4



HIRL all Rwy's
TDZ/CL Rwy's 8L, 9R,
10, 26R, 27L and 28

ILS PRM RWY 28 (SA CAT I) (CLOSE PARALLEL)

SE-4, 10 JUL 2025 to 07 AUG 2025