

ILS PRM RWY 28 (CLOSE PARALLEL)  
HARTSFIELD/JACKSON ATLANTA INTL (ATL)

**MISSED APPROACH:** Climb to 1500 then climbing left turn to 3000 on heading 216° and LGC VORTAC R-062 to PAJVO/LGC 28 DME/RADAR and hold.

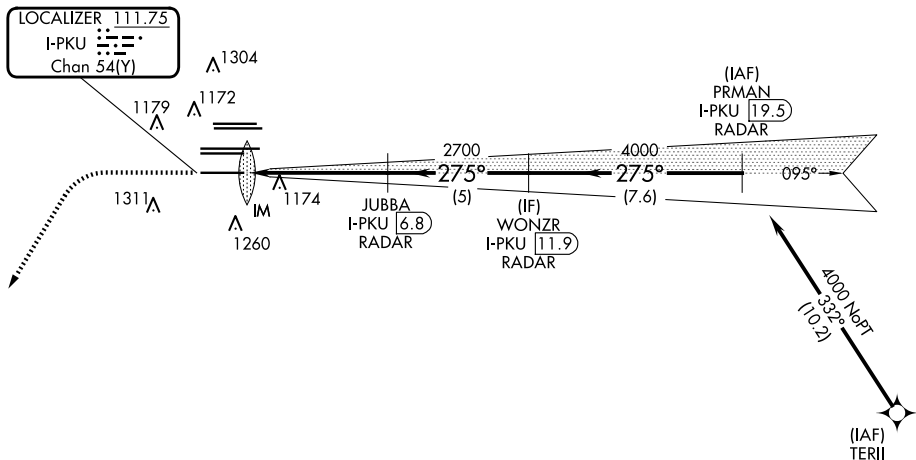
**T** Simultaneous approach authorized. Use of FD or AP required during simultaneous operations. Dual VHF comm required. See additional requirements on AAUP.

D-ATIS	ATLANTA	ATLANTA TOWER						ALL	GND CON				ALL
ARR <b>119.65</b>	APP CON	8L-26R	8R-26L	9L-27R	9R-27L	10-28	RWYS		(8L-26R,8R-26L)	(9L-27R,9R-27L)	10-28	RWYS	
DEP <b>125.55</b>	<b>127.9 379.9</b>	<b>119.1</b>	<b>125.325</b>	<b>123.85</b>	<b>119.3</b>	<b>119.5</b>	<b>254.4</b>		<b>121.9</b>	<b>121.75</b>	<b>121.65</b>	<b>254.4</b>	
		<b>PRM 133.425</b>											

CLNC  
DEL

CPDLC

A 2049

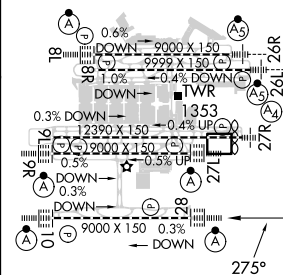


ELEV 1026	<b>D</b>	TDZE 998
-----------	----------	----------

1500 ↑	3000 hdg 216°	LGC R-062	PAJVO LGC 28
-----------	---------------------	--------------	-----------------

VGSI and ILS glidepath not coincident  
(VGSI Angle 3.00/TCH 72).

CATEGORY	A	B	C	D
S-ILS 28	1198/18 200 (200-½)			



HIRL all Rwy's  
TDZ/CL Rwy's 8L, 9R,  
10, 26R, 27L and 28