

LOC/DME I-FSQ  
**108.5**  
Chan **22**

APP CRS  
**275°**

Rwy Idg  
TDZE **999**  
Apt Elev **1026**

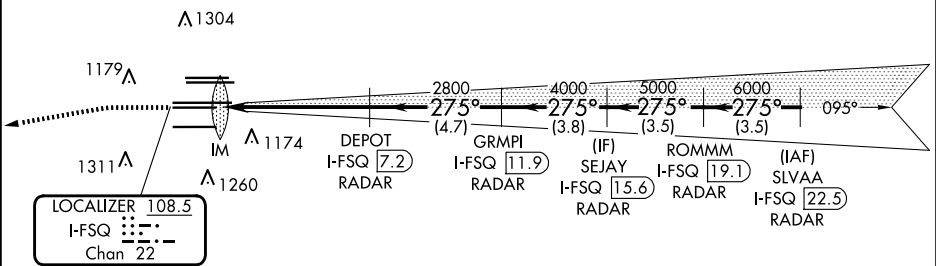
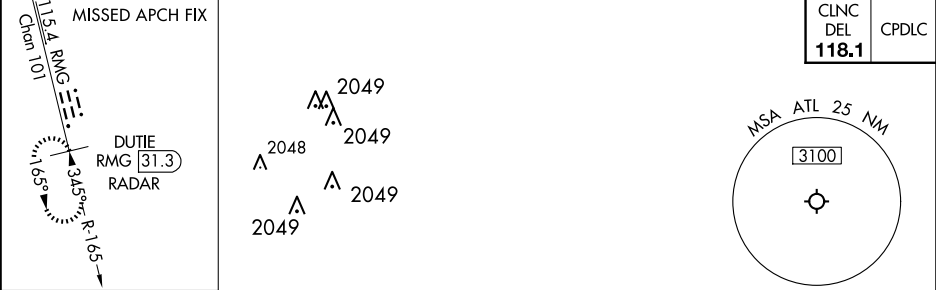
RADAR required for procedure entry. DME or RADAR required.

Simultaneous approach authorized. Use of FD or AP required during simultaneous operations. Dual VHF Comm required. See additional requirements on AAUP. Requires specific OPSPEC, MSPEC, or LOA approval.

ALSF-2

MISSED APPROACH: Climb to 1500 then climbing left turn to 4000 on heading 265° and RMG VORTAC R-165 to DUTIE/ RMG 31.3 DME/RADAR and hold.

D-ATIS ARR <b>119.65</b> DEP <b>125.55</b>	ATLANTA APP CON <b>127.9 379.9</b>	ATLANTA TOWER ALL 8L-26R 8R-26L 9L-27R 9R-27L 10-28 RWYS <b>119.1 125.325 123.85 119.3 119.5 254.4</b> <b>PRM 132.55</b>	GND CON (8L-26R,8R-26L) (9L-27R,9R-27L) 10-28 <b>121.9 121.75 121.65 254.4</b>	ALL RWYS <b>254.4</b>
--	--	--	--	-----------------------------



ELEV **1026**

**D**

TDZE **999**

1500

4000

hdg 265°

RMG R-165

DUTIE  
RMG **31.3**

VGSI and ILS glidepath not coincident SLVAA  
(VGSI Angle 3.00/TCH 79).

SEJAY

ROMMM

I-FSQ **15.6**

I-FSQ **19.1**

RADAR

RADAR

DEPOT

GRMPI

I-FSQ **7.2**

I-FSQ **11.9**

RADAR

RADAR

IM

2800

4000

5000

6000

275°

7000

GS 3.00°

TCH 58

1078

5.5 NM

4.7 NM

3.8 NM

3.5 NM

3.5 NM

CATEGORY	A	B	C	D
S-ILS 27L	RA 214/14 150 DA 1149			

HIRL all Rwy  
TDZ/CL Rwy 8L, 9R,  
10, 26R, 27L and 28

**SA CATEGORY I ILS- SPECIAL AIRCREW  
& AIRCRAFT CERTIFICATION REQUIRED**