

ATLANTA, GEORGIA

AL-26 (FAA)

ILS PRM RWY 10  
(CLOSE PARALLEL)

HARTSFIELD/JACKSON ATLANTA INTL (ATL)

LOC/DME I-OMO <b>111.55</b> Chan <b>52</b> (Y)	APP CRS <b>095°</b>	Rwy Idg <b>9000</b> TDZE <b>1000</b> Apt Elev <b>1026</b>
--	------------------------	---

DME or RADAR required. RNP APCH - GPS from YINNZ.



Simultaneous approach authorized. Procedure NA when glide slope not available (ILS procedures only). Dual VHF Comm required. See additional requirements on AAUP. Localizer not suitable for electronic rollout guidance.

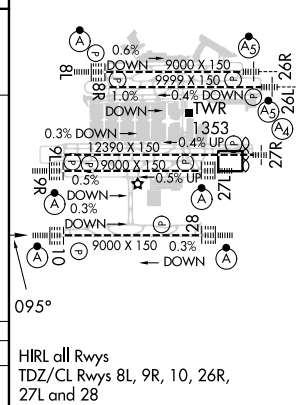
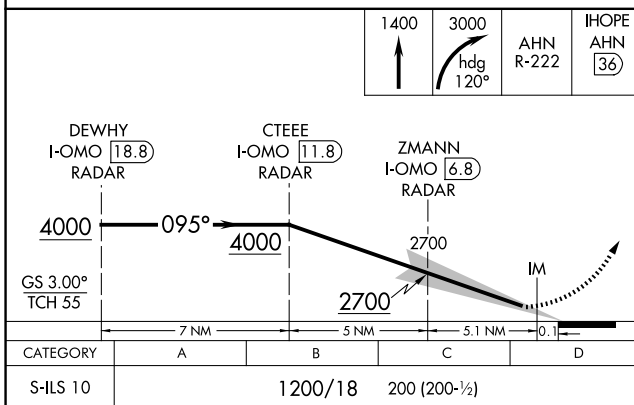
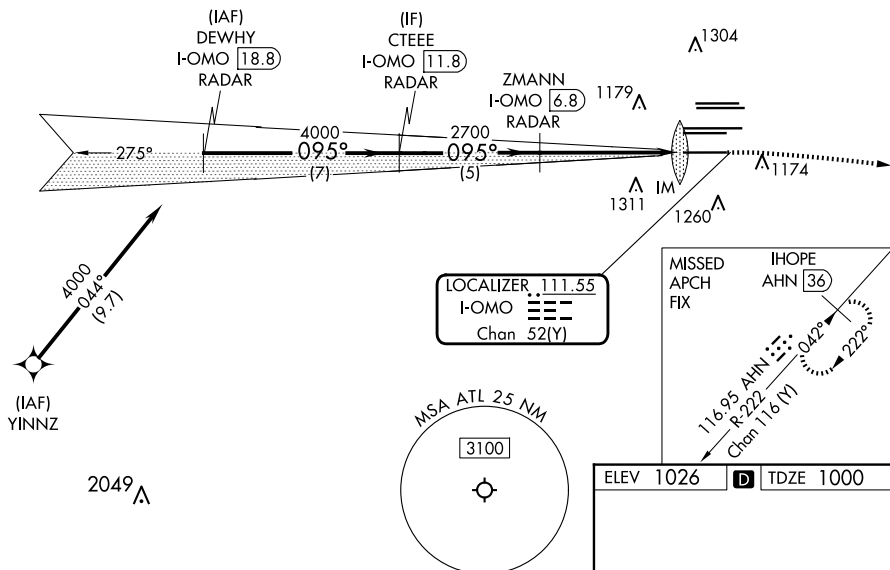
ALSF-2



**MISSED APPROACH:** Climb to 1400 then climbing right turn to 3000 on heading 120° and AHN R-222 to JHOPE/AHN 36 DME and hold.

D-ATIS	ATLANTA	ATLANTA TOWER						ALL				
ARR <b>119.65</b>	APP CON	8L-26R	8R-26L	9L-27R	9R-27L	10-28	RWYS	(8L-26R,8R-26L)	(9L-27R,9R-27L)	10-28	RWYS	
DEP <b>125.55</b>	<b>127.9 379.9</b>	<b>119.1</b>	<b>125.325</b>	<b>123.85</b>	<b>119.3</b>	<b>119.5</b>	<b>254.4</b>	<b>121.9</b>	<b>121.75</b>	<b>121.65</b>	<b>254.4</b>	
		PRM 133.425										

CLNC DEL <b>118.1</b>	CPDLC
-----------------------------	-------



ATLANTA, GEORGIA

33°38'N-84°26'W

HARTSFIELD/JACKSON ATLANTA INTL (ATL)

Amdt 5 30DEC21

ILS PRM RWY 10 (CLOSE PARALLEL)

SE-4, 10 JUL 2025 to 07 AUG 2025

SE-4, 10 JUL 2025 to 07 AUG 2025