

LOC/DME I-ATL

109.9

Chan 36

APP CRS

095°

Rwy Idg

9999 8800

TDZE

1024 1015

Apt Elev

1026 1026

ILS or LOC RWY 8R

HARTSFIELD/JACKSON ATLANTA INTL (ATL)

RADAR required for procedure entry.
DME or RADAR required.

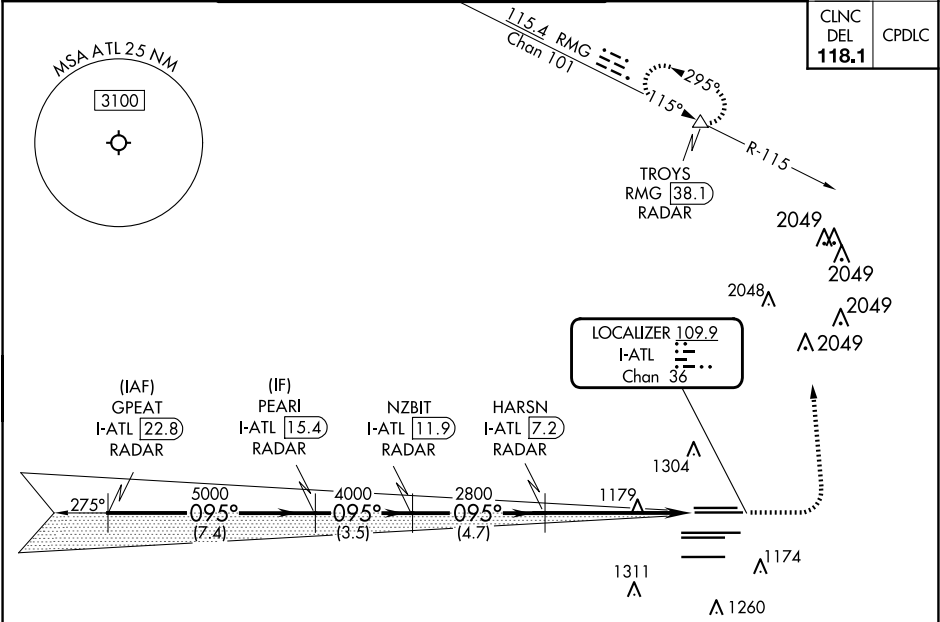
Simultaneous approach authorized. Sidestep 8L for inop ALSF-2, increase Cat E visibility to 2.

Rwy 8L

ALSF-2

MISSED APPROACH: Climb to 1500 then climbing left turn to 3500 on heading 360° and RMG VORTAC R-115 to TROYS/RMG 38.1 DME/RADAR and hold.

D-ATIS	ATLANTA	ATLANTA TOWER					ALL	GND CON			ALL
ARR 119.65	APP CON	8L-26R	8R-26L	9L-27R	9R-27L	10-28	RWYS	(8L-26R,8R-26L)	(9L-27R,9R-27L)	10-28	RWYS
DEP 125.55	127.9 379.9	119.1	125.325	123.85	119.3	119.5	254.4	121.9	121.75	121.65	254.4



ELEV 1026

TDZE 8R 1024

TDZE 8L 1015

VGSI and ILS glidepath not coincident (VGSI Angle 3.00/TCH 67).

1500

3500

hdg 360°

RMG R-115

TROYS

GPEAT I-ATL 22.8 RADAR

PEARL I-ATL 15.4 RADAR

NZBIT I-ATL 11.9 RADAR

HARSN I-ATL 7.2 RADAR

I-ATL 2.9

I-ATL 1.8

5000 095°

5000

4000

2800

2800

GS 3.00° TCH 53

7.4 NM

3.5 NM

4.7 NM

4.3 NM

1.1 NM

CATEGORY	A	B	C	D	E
S-ILS 8R	1282/40 258 (300-¾)				
S-LOC 8R	1440/55	416 (500-1)	1440/60 416 (500-1¼)		
SIDESTEP 8L	1440/55	425 (500-1)	1440/60 425 (500-1¼)	1440-1½	425 (500-1½)

095°

0.6%

9000 X 150

9999 X 150

1.0%

0.4% DOWN

DOWN

0.3% DOWN

12350 X 150

0.4% UP

9000 X 150

0.5%

0.3% UP

DOWN

9000 X 150

0.3%

DOWN

27R 261 26R

1353

27

28

HIRL all Rwys

TDZ/CL Rwys 8L, 9R, 10, 26R, 27L and 28

FAF to MAP 5.4 NM

Knots	60	90	120	150	180
Min:Sec	5:24	3:36	2:42	2:10	1:48