
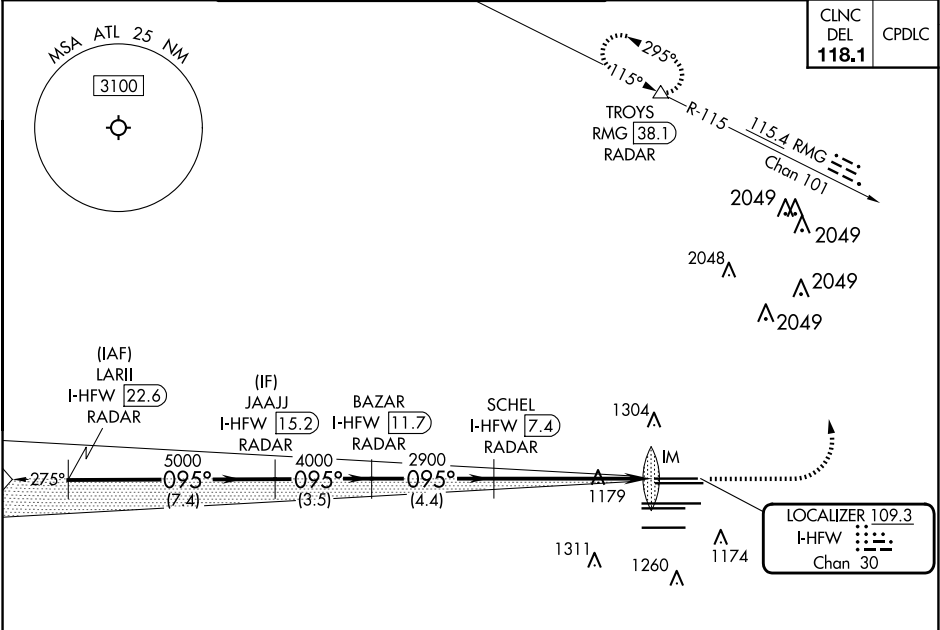


LOC/DME I-HFW	APP CRS	Rwy Idg	8L	8R
109.3	095°	TDZE	8800	9999
Chan 30		Apt Elev	1015	1024
			1026	1026

ILS or LOC RWY 8L
HARTSFIELD/JACKSON ATLANTA INTL (ATL)

RADAR required for procedure entry. DME or RADAR required.					Rwy 8L ALS-F-2		MISSED APPROACH: Climb to 1500 then climbing left turn to 3500 on heading 360° and RMG VORTAC R-115 to TROYS/RMG 38.1 DME/RADAR and hold.						
▼		Simultaneous approach authorized. Inop table does not apply to sidestep 8R.											
D-ATIS		ATLANTA		ATLANTA TOWER					GND CON		ALL		
ARR 119.65		APP CON		8L-26R	8R-26L	9L-27R	9R-27L	10-28	RWYS	(8L-26R,8R-26L)	(9L-27R,9R-27L)	10-28	ALL RWYS
DEP 125.55		127.9 379.9		119.1	125.325	123.85	119.3	119.5	254.4	121.9	121.75	121.65	254.4



ELEV 1026		TDZE 8L 1015	
		TDZE 8R 1024	
VGSI and ILS glidepath not coincident (VGSI Angle 3.00/TCH 70).		1500 3500 RMG TROYS	
		hdg 360° R-115	
LARI I-HFW 22.6		JAAJ I-HFW 15.2	
BAZAR I-HFW 11.7		SCHEL I-HFW 7.4	
IM I-HFW 1.6			
GS 3.00° TCH 50			
7.4 NM		3.5 NM	
4.4 NM		4.6 NM	
1.1 NM		0.1 NM	
CATEGORY	A	B	C
S-ILS 8L	1215/18	200 (200-½)	
S-LOC 8L	1460/24	445 (500-½)	1460/45 445 (500-¾)
SIDESTEP 8R	1460/55	436 (500-1)	1460-1½ 436 (500-1½) 1460-2 436 (500-2)