

LOC I-AFA	APP CRS	Rwy Idg	27R	27L
111.3	275°	TDZE	11890	8865
		Apt Elev	985	999
			1026	1026

ILS or LOC RWY 27R
HARTSFIELD/JACKSON ATLANTA INTL (ATL)

DME and RADAR required.

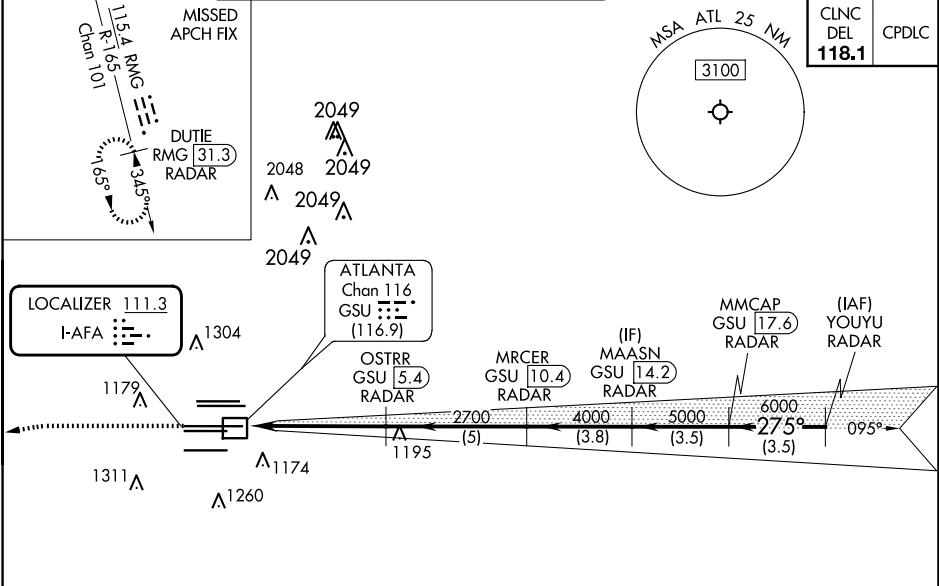
Simultaneous approach authorized. Inop table does not apply to S-ILS 27R all Cats. DME from GSU DME. DME use requires simultaneous reception of I-AFA and GSU DME.

Rwy 27R MALS

Rwy 27L ALSF-2

MISSED APPROACH: Climb to 1500 then climbing left turn to 4000 on heading 265° and RMG VORTAC R-165 to DUTIE/RMG 31.3 DME/RADAR and hold.

D-ATIS	ATLANTA	ATLANTA TOWER					ALL	GND CON		ALL
ARR 119.65	APP CON	8L-26R	8R-26L	9L-27R	9R-27L	10-28	RWYS	(8L-26R,8R-26L)	(9L-27R,9R-27L)	10-28
DEP 125.55	127.9	379.9	119.1	125.325	123.85	119.3	119.5	254.4	121.9	121.75 121.65 254.4



ELEV 1026

TDZE 27R 985
TDZE 27L 999

HIRL all Rwy
TDZ/CL Rwy 8L, 9R,
10, 26R, 27L and 28

FAF to MAP 5.2 NM

Knots	60	90	120	150	180
Min:Sec	5:12	3:28	2:36	2:05	1:44

1500 4000 RMG R-165 DUTIE RMG 31.3

VGSI and ILS glidepath not coincident (VGSI Angle 3.00/TCH 72).

Diagram showing the glide path with altitudes 1500, 4000, 2700, 4000, 5000, 6000, 7000 and distances 1.2, 4 NM, 5 NM, 3.8 NM, 3.5 NM, 3.5 NM.

CATEGORY	A	B	C	D
S-ILS 27R	1185/40		200 (200-¾)	
S-LOC 27R	1420/40	435 (400-¾)	1420/50	435 (400-1)
SIDESTEP 27L	1420/55 421 (400-1)			1420-1½ 421 (400-1½)