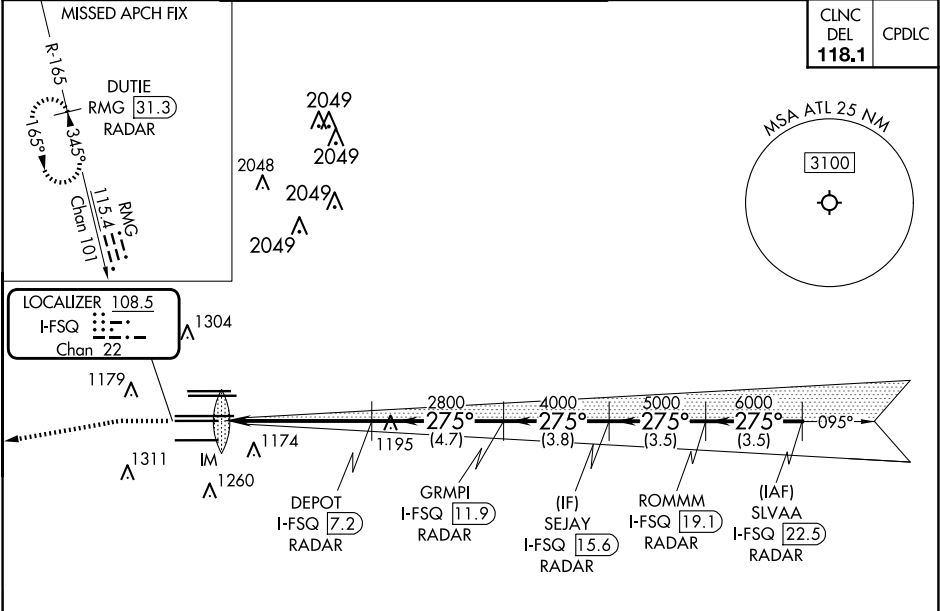


LOC/DME I-FSQ 108.5 Chan 22	APP CRS 275°	Rwy Idg 27L TDZE 8865 Apt Elev 1026	27R 11890 985 1026
---	------------------------	--	---

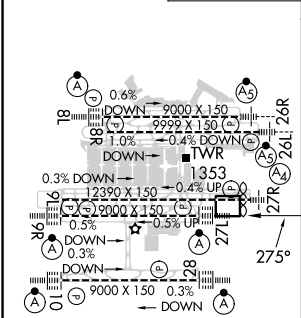
ILS or LOC RWY 27L
HARTSFIELD/JACKSON ATLANTA INTL (ATL)

DME or RADAR required. RADAR required for procedure entry.	Rwy 27L ALSIF-2	Rwy 27R MALS	MISSED APPROACH: Climb to 1500 then climbing left turn to 4000 on heading 265° and RMG VORTAC R-165 to DUTIE/RMG 31.3 DME/RADAR and hold.
Simultaneous approach authorized. Inop table does not apply to Sidestep Rwy 27R.			

D-ATIS ARR 119.65 DEP 125.55	ATLANTA APP CON 127.9 379.9	ATLANTA TOWER 8L-26R 119.1 25.325 8R-26L 123.85 9L-27R 119.3 9R-27L 119.5 10-28 RWYS 254.4	ALL RWYS 121.9	GND CON (8L-26R, 8R-26L) 121.75 (9L-27R, 9R-27L) 121.65	ALL RWYS 254.4
--	--	--	--------------------------	---	--------------------------



ELEV 1026	TDZE 27L 999 TDZE 27R 985
-----------	------------------------------



HIRL all Rwy 27L TDZ/CL Rwy 8L, 9L, 10, 26R, 27L and 28	FAF to MAP 5.5 NM
Knots	60 90 120 150 180
Min:Sec	5:30 3:40 2:45 2:12 1:50

1500	4000	RMG R-165	DUTIE RMG 31.3	VGSI and ILS glidepath not coincident (VGSI Angle 3.00°/TCH 79°)	SLVAA I-FSQ 22.5
hdg 265°					
I-FSQ 1.6	I-FSQ 2.8	DEPOT I-FSQ 7.2	GRMPI I-FSQ 11.9	SEJAY I-FSQ 15.6	ROMMM I-FSQ 19.1
IM	2800	2800	4000	5000	6000
0.1	1 NM	4.4 NM	4.7 NM	3.8 NM	3.5 NM
CATEGORY	A	B	C	D	
S-ILS 27L	1199/18 200 (200-½)				
S-LOC 27L	1420/24	421 (400-½)	1420/40	421 (400-¾)	
SIDESTEP 27R	1420-1½	435 (400-1½)	1420-2¼	435 (400-2¼)	1420-2¾

SE-4, 10 JUL 2025 to 07 AUG 2025

SE-4, 10 JUL 2025 to 07 AUG 2025