

250.51

LOC/DME I-FUN 108.9 Chan 26	APP CRS 095°	Rwy Idg 9000 TDZE 1026 Apt Elev 1026
---	------------------------	---

ILS RWY 9R (CAT II & III)
HARTSFIELD/JACKSON ATLANTA INTL (ATL)

RADAR required for procedure entry, DME.

T

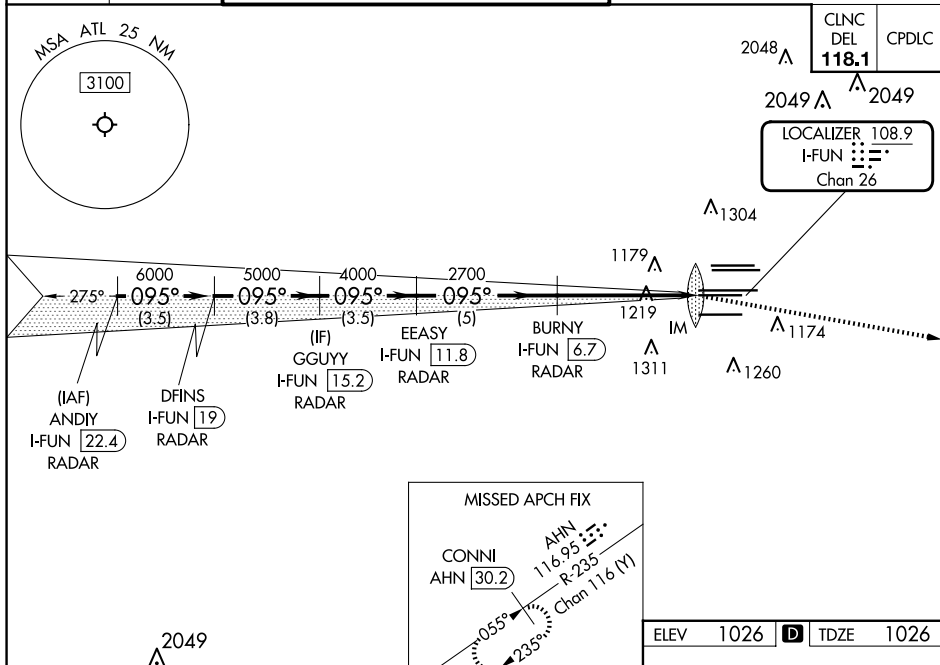
Simultaneous approach authorized.

ALSF-2



MISSED APPROACH: Climb to 4000 on heading 100° and AHN VOR/DME R-235 to CONNI/AHN 30.2 DME and hold

D-ATIS	ATLANTA APP CON	ATLANTA TOWER						GND CON			
		8L-26R	8R-26L	9L-27R	9R-27L	10-28	ALL RWYS	(8L-26R,8R-26L)	(9L-27R,9R-27L)	10-28	ALL RWYS
ARR	119.65										
DEP	125.55	127.9	379.9	119.1	125.325	123.85	119.3	119.5	254.4	121.9	121.75 121.65 254.4



ANDIY I-FUN 22.4
RADAR

DFINS I-FUN 19
RADAR

GGUY I-FUN 15.2
RADAR

EEASY I-FUN 11.8
RADAR

BURNY I-FUN 6.7
RADAR

IM

7000
6000
5000
4000
2700
1125

095°

GS 3.00°
TCH 55

3.5 NM
3.8 NM
3.5 NM
5 NM
5.1 NM
1.152 NM

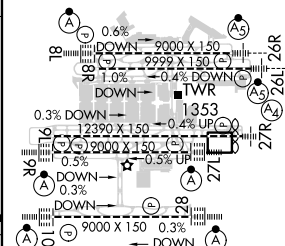
VGS1 and ILS glidepath not coincident
(VGS1 Angle 3.00/TCH 70).

4000
hdg 100°

AHN R-235
AHN 30.2

CATEGORY	A	B	C	D
S-ILS 9R	CAT II RA 118/12 100 DA 1126			
S-ILS 9R	CAT III RVR 03			

CATEGORY II & III ILS - SPECIAL AIRCREW
& AIRCRAFT CERTIFICATION REQUIRED



HIRL all Rwys
TDZ/CL Rwys 8L,
9R, 10, 26R, 27L and 28

HARTSFIELD/JACKSON ATLANTA INTL (ATL)

Amdt 20 22APR21

33°38'N-84°26'W

ILS RWY 9R (CAT II & III)