

LOC/DME I-PKU

111.75

Chan 54(Y)

APP CRS

275°

Rwy ldg TDZE

998

Apt Elev

1026

ILS RWY 28 (SA CAT I)

HARTSFIELD/JACKSON ATLANTA INTL (ATL)

RNAV 1-GPS or RADAR required for procedure entry.
From TERII: RNAV 1-GPS required. DME or RADAR required.

ALSIF-2

MISSED APPROACH: Climb to 1500 then climbing left turn to 3000 on heading 216° and LGC VORTAC R-062 to PAJVO/LGC 28 DME/RADAR and hold.

D-ATIS	ATLANTA	ATLANTA TOWER						ALL	GND CON	ALL
ARR 119.65	APP CON	8L-26R	8R-26L	9L-27R	9R-27L	10-28	RWYS	(8L-26R,8R-26L)	(9L-27R,9R-27L)	10-28
DEP 125.55	127.9 379.9	119.1	125.325	123.85	119.3	119.5	254.4	121.9	121.75	121.65 254.4

LOCALIZER 111.75

I-PKU

Chan 54(Y)

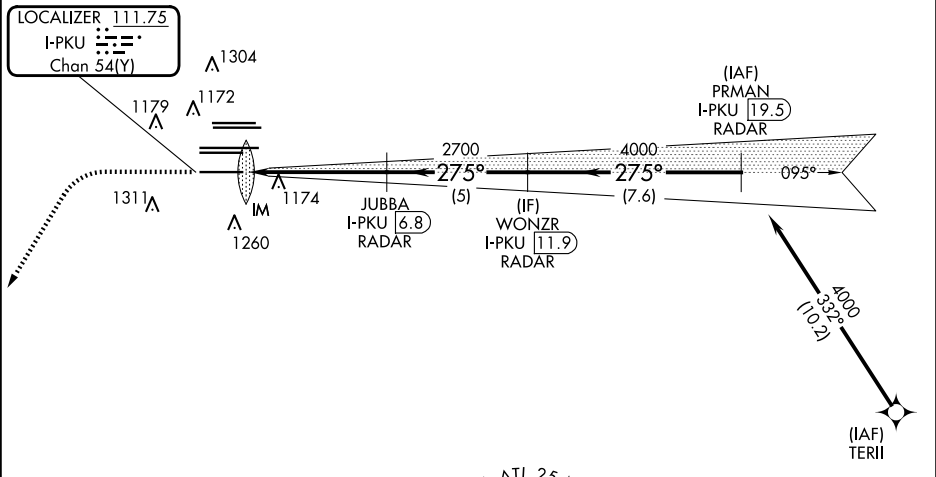
Λ 2049

Λ 2049

CLNC DEL

118.1

CPDLC



MISSED APCH FIX

PAJVO LGC 28 RADAR

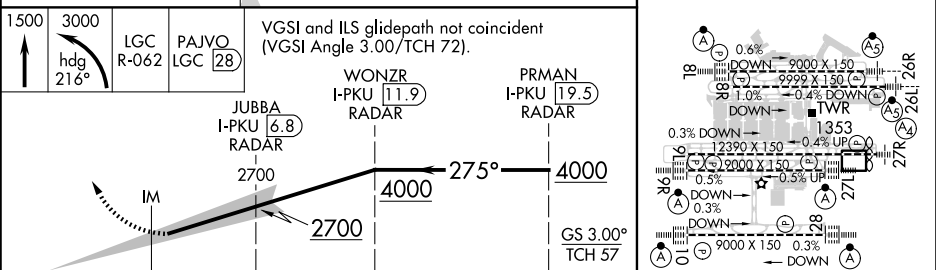
115.6 LGC R-062 Chan 103

062°

242°

ELEV 1026

TDZE 998



SA CATEGORY I ILS - SPECIAL AIRCREW & AIRCRAFT CERTIFICATION REQUIRED

HIRL all Rwy's TDZ/CL Rwy's 8L, 9R, 10, 26R, 27L and 28