

LOC/DME I-GXZ	APP CRS	Rwy ldg	8500
110.1	275°	TDZE	990
Chan 38		Apt Elev	1026

ILS RWY 26R (SA CAT I & II)

HARTSFIELD/JACKSON ATLANTA INTL (ATL)

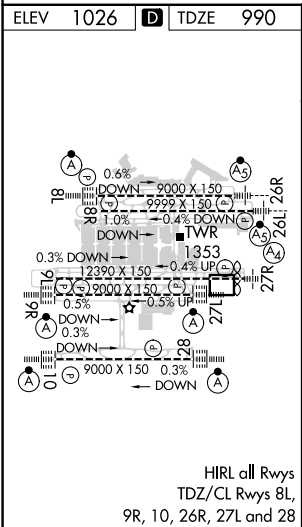
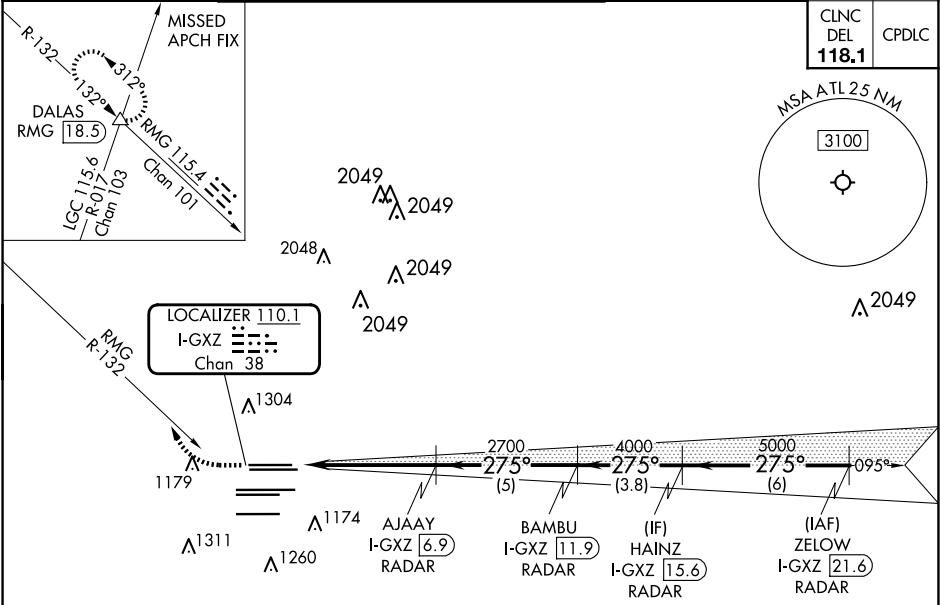
RADAR required.

SA CAT I/II: Requires specific OPSPEC, MSPEC, or LOA approval. Simultaneous approach authorized.

MALSR

MISSED APPROACH: Climb to 1800 then climbing right turn to 4000 on RMG VORTAC R-132 to DALAS INT/RMG 18.5 DME and hold.

D-ATIS	ATLANTA APP CON	ATLANTA TOWER					ALL RWYS	GND CON	ALL RWYS
ARR 119.65	127.9 379.9	8L-26R	8R-26L	9L-27R	9R-27L	10-28	(8L-26R, 8R-26L)	(9L-27R, 9R-27L)	10-28
DEP 125.55		119.1	125.325	123.85	119.3	119.5	254.4	121.9	121.75 121.65 254.4



1800	4000	DALAS	VGSI and ILS glidepath not coincident (VGSI Angle 3.00/TCH 69).			
↑	RMG R-132	△	AJAAY I-GXZ [6.9] RADAR	BAMBU I-GXZ [11.9] RADAR	HAINZ I-GXZ [15.6] RADAR	ZELOW I-GXZ [21.6] RADAR
			2700	4000	5000	GS 3.00° TCH 55
			5.2 NM	5 NM	3.8 NM	6 NM
			CATEGORY A	B	C	D
			S-ILS 26R	SA CAT I RA 170/14	150 DA 1140	
			S-ILS 26R	SA CAT II RA 110/12	100 DA 1090	
SA CATEGORY I & II ILS - SPECIAL AIRCREW & AIRCRAFT CERTIFICATION REQUIRED						