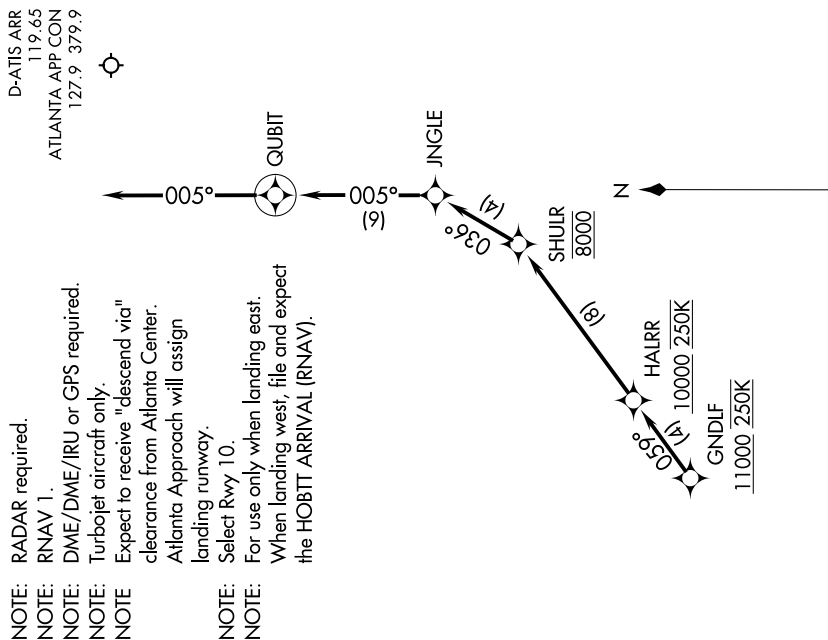


NOTE: Chart not to scale.



SE-4, 10 JUL 2025 to 07 AUG 2025

BEORN TRANSITION (BEORN.GNDLF2): Assigned by ATC only.  
COOUP TRANSITION (COOUP.GNDLF2): Assigned by ATC only.  
DRSDN TRANSITION (DRSDN.GNDLF2): Assigned by ATC only.  
ENNIT TRANSITION (ENNIT.GNDLF2): Assigned by ATC only.  
FRDDO TRANSITION (FRDDO.GNDLF2): Assigned by ATC only.  
GOLM TRANSITION (GOLM.GNDLF2): Assigned by ATC only.  
KHMYA TRANSITION (KHMYA.GNDLF2): Assigned by ATC only.  
ORRKK TRANSITION (ORRKK.GNDLF2): Assigned by ATC only.  
SHYRE TRANSITION (SHYRE.GNDLF2): Assigned by ATC only.  
STRDR TRANSITION (STRDR.GNDLF2): Assigned by ATC only.

From GNDLF on track 059° to cross HALRR at or above 10000 and at 250K, then on track 059° to cross SHULR at 8000, then on track 036° to JINGLE, then on track 005° to QUBIT, then on track 005°. Expect RADAR vectors to final approach course.

LOST COMMUNICATIONS:

ASSIGNED RWY 10 or NOT ASSIGNED: Cross HALRR at or above 10000; cross SHULR at 8000; cross QUBIT at 5000; after QUBIT descend to 3000 and proceed direct DEWHY; proceed on the ILS or RNAV Rwy 10 approach. ASSIGNED RWY 9L: Cross HALRR at or above 10000; cross SHULR at 8000; cross QUBIT at 6000; after QUBIT proceed direct RYENN and proceed on the ILS or RNAV Rwy 9L approach. ASSIGNED RWY 9R: Cross HALRR at or above 10000; cross SHULR at 8000; cross QUBIT at 6000; after QUBIT proceed direct ANDYI and proceed on the ILS or RNAV Rwy 9R approach. ASSIGNED RWY 8L: Cross HALRR at or above 10000; cross SHULR at 8000; cross QUBIT at 6000; after QUBIT proceed direct LARLI and proceed on the ILS or RNAV Rwy 8L approach. ASSIGNED RWY 8R: Cross HALRR at or above 10000; cross SHULR at 8000; cross QUBIT at 6000; after QUBIT proceed direct GPEAT and proceed on the ILS or RNAV Rwy 8R approach.