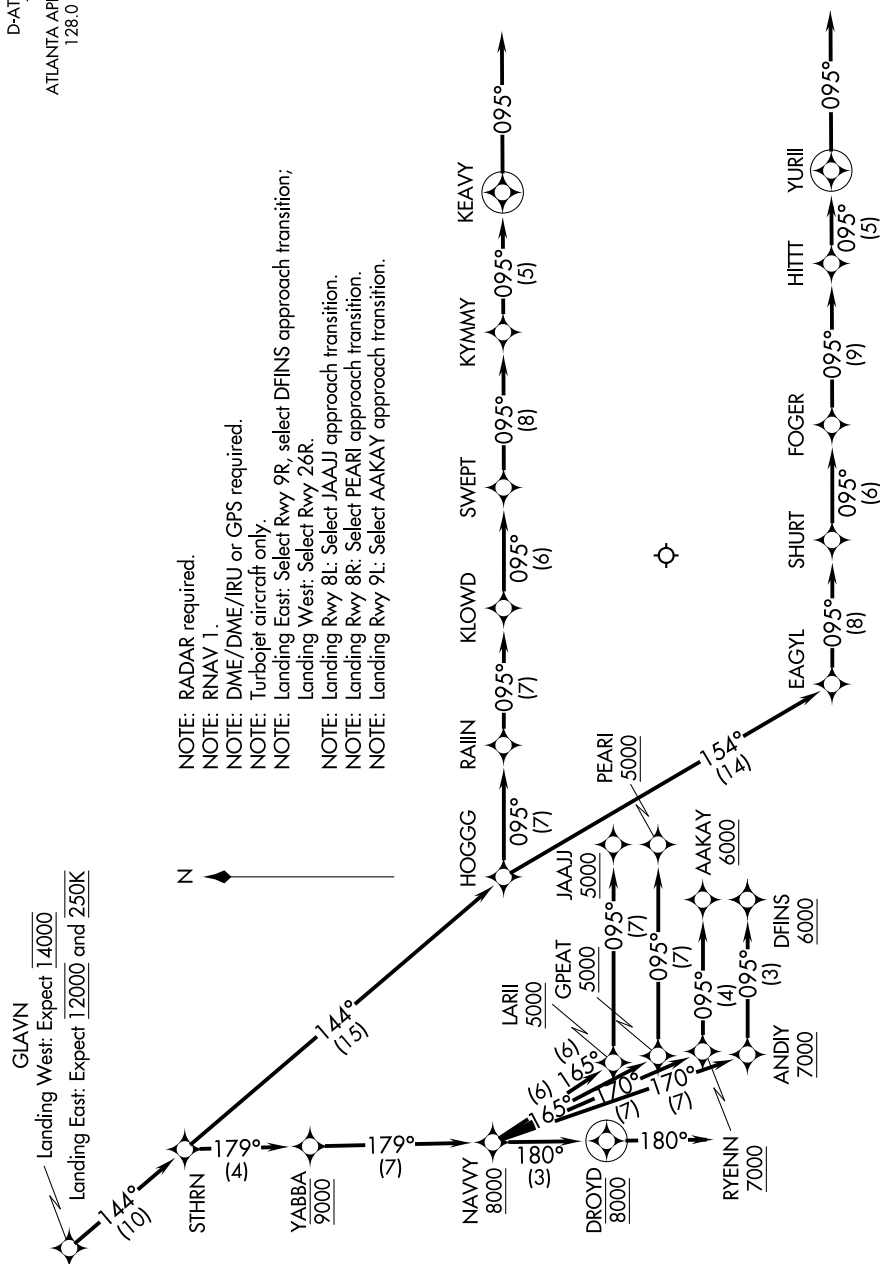


GLAVN ONE ARRIVAL (RNAV) Arrival Routes

ATLANTA, GEORGIA

D-ATIS ARR
119.65
ATLANTA APP CON
128.0 379.9



NOTE: RADAR required.
NOTE: RNAV 1.
NOTE: DME/DME/IRU or GPS required.
NOTE: Turbojet aircraft only.
NOTE: Landing East: Select Rwy 9R, select DFINS approach transition;
Landing West: Select Rwy 26R.
NOTE: Landing Rwy 8L: Select JAAJ approach transition.
NOTE: Landing Rwy 8R: Select PEARL approach transition.
NOTE: Landing Rwy 9L: Select AAKAY approach transition.

NOTE: Chart not to scale.

(CONTINUED ON FOLLOWING PAGE)

SE-4, 10 JUL 2025 to 07 AUG 2025