

LOC I-AST

109.5

APP CRS

261°

Rwy Ldg

4780

TDZE

14

Apt Elev

15

ILS RWY 26

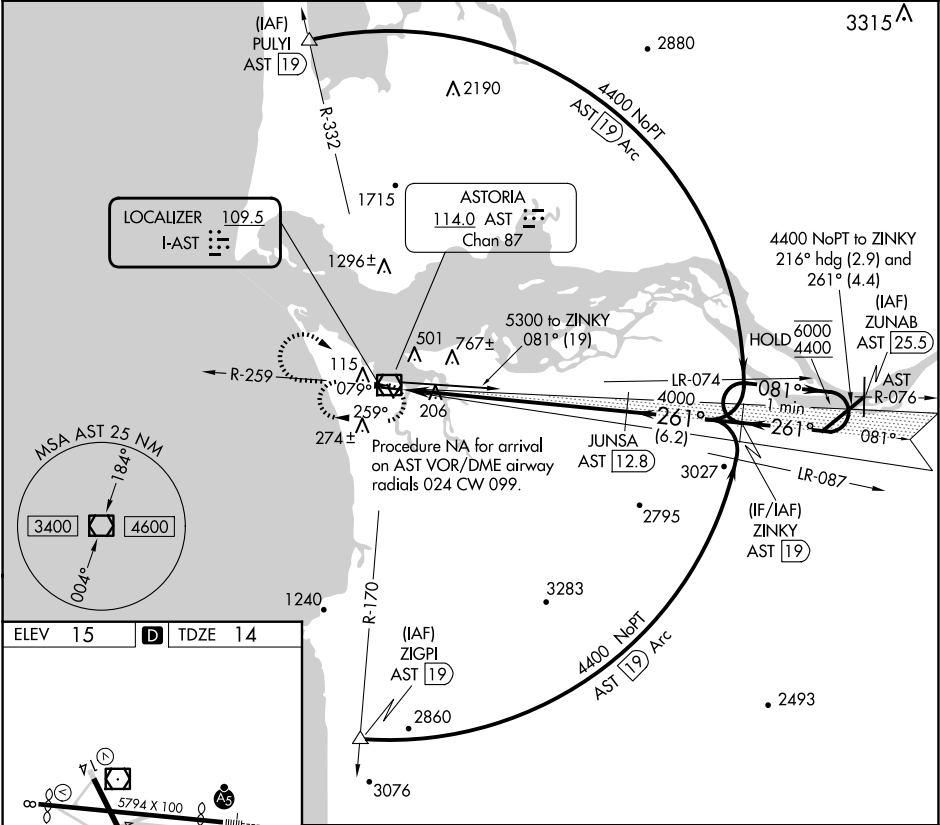
ASTORIA RGNL (AST)

DME required for procedure entry.

MALS

MISSED APPROACH: Climb to 1500 then climbing right turn to 2900 direct AST VOR/DME and hold.

ASOS 135.375	SEATTLE CENTER 124.2 317.6	UNICOM 122.8 (CTAF) 0
-----------------	-------------------------------	--------------------------



ELEV 15

D

TDZE 14

REIL Rwy 8

REIL Rwy 14

MIRL Rwy 8-26 and 14-32

1500

2900

AST

JUNSA AST 12.8

ZINKY AST 19

One Minute Holding Pattern

4000

4000

6000

4400

081°

261°

GS 3.00°

TCH 56

12.3 NM

6.2 NM

CATEGORY	A	B	C	D
S-ILS 26	264-1 250 (300-1)			