


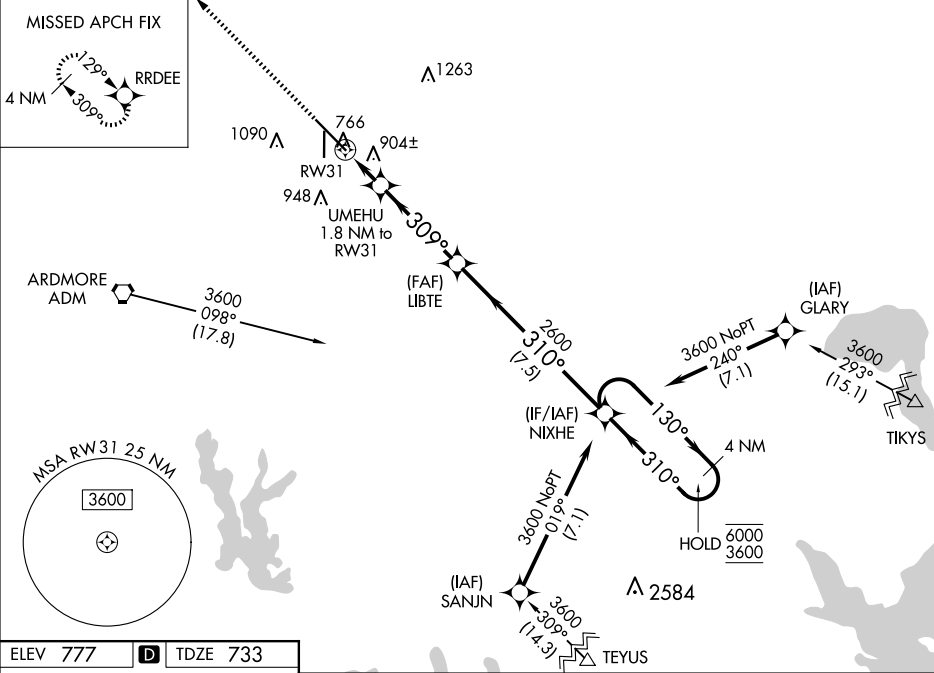


WAAS CH 69625 W31A	APP CRS 309°	Rwy Idg 9002 TDZE 733 Apt Elev 777
--	------------------------	---

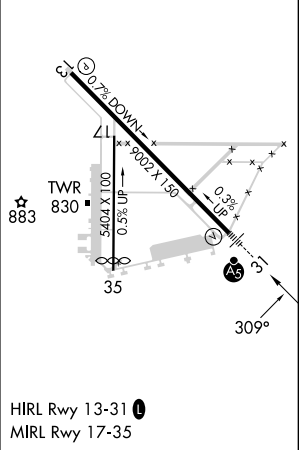
RNAV (GPS) RWY 31

ARDMORE MUNI (ADM)

RNP APCH - GPS.			MALSR 	MISSED APPROACH: Climb to 3600 direct RRDEE and hold.	
<div><div></div><div></div></div> <div>For uncompensated Baro-VNAV systems, LNAV/VNAV NA below -16°C or above 54°C. Inop table does not apply to LPV all Cats. For inop ALS, increase LNAV/VNAV all Cats and LNAV Cats C and D visibility to 1½ SM.</div>					
ATIS 125.6	FORT WORTH CENTER 124.75 323.0	ARDMORE TOWER★ 118.5 (CTAF) 0 257.7	GND CON 121.8	UNICOM 122.95	



ELEV 777	D	TDZE 733
-----------------	----------	-----------------



3600 RRDEE		LIBTE 2600		NIXHE 4 NM Holding Pattern	
UMEHU 1.8 NM to RW31		1.2 NM to RW31		130° → 6000	
RW31		309°		← 310° 3600	
1.2 NM		0.6		GP 3.00° TCH 49	
CATEGORY		A		B	
LPV		DA		933-½	
LNAV/VNAV		DA		1200-1	
LNAV MDA		1160-½		1160-¾	
CIRCLING		1300-1		1700-3	
		523 (600-1)		923 (1000-3)	