

LOC I-AIW	APP CRS	Rwy Idg	9002
108.9	309°	TDZE	733
		Apt Elev	777

ILS or LOC RWY 31

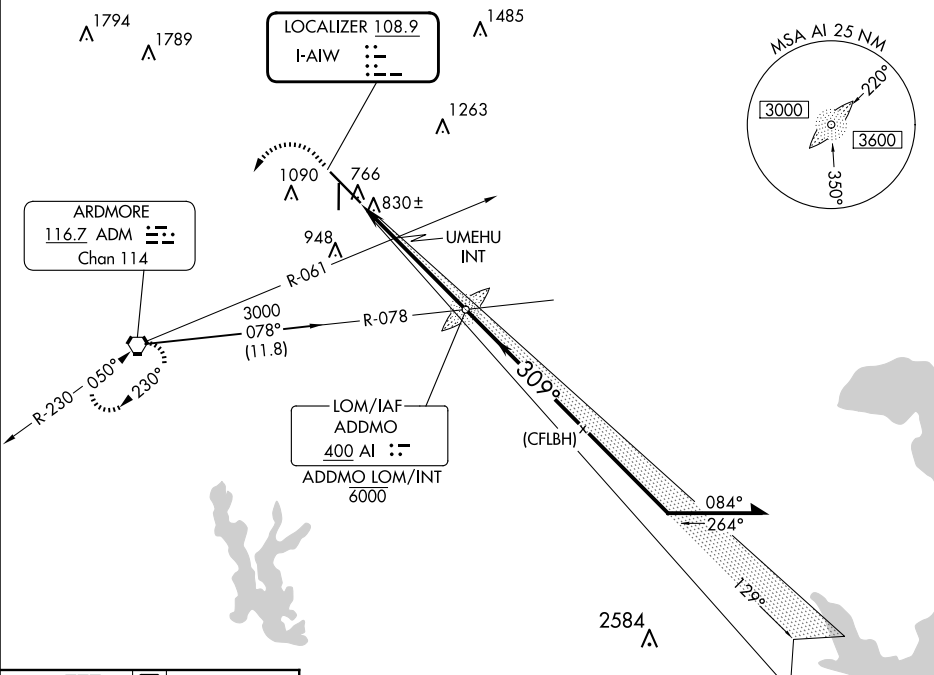
ARDMORE MUNI (ADM)

Autopilot coupled approach NA below 1360. Inop table does not apply to S-ILS 31 all Cats, S-LOC 31 Cats A and B, and UMEHU fix minimums S-LOC 31 Cats A and B. For inop ALS, increase UMEHU fix minimums S-LOC 31 Cats C and D visibility to 1 SM.

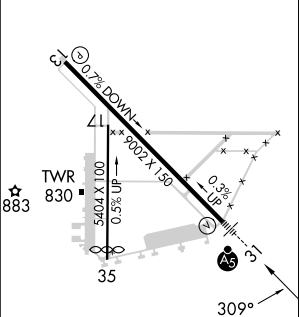
MALSRL

MISSED APPROACH: Climb to 2000 then climbing left turn to 3000 direct ADM VORTAC and hold.

ATIS	FORT WORTH CENTER	ARDMORE TOWER ★	GND CON	UNICOM
125.6	124.75 323.0	118.5 (CTAF) 257.7	121.8	122.95



ELEV 777	TDZE 733
----------	----------



HIRL Rwy 13-31	
MIRL Rwy 17-35	
FAF to MAP 5.4 NM	
Knots	60 90 120 150 180
Min:Sec	5:24 3:36 2:42 2:10 1:48

	2000	3000	ADM	*1320 when using Ardmore Downtown Executive altimeter setting.
	↑	↩	⬢	
	VGSI and ILS glidepath not coincident (VGSI Angle 3.00/TCH 49).			
		UMEHU INT	1280 *	
		AI LOM ADDMO INT	6000	129°
			2520	309°
			2600	3000
				GS 3.00° TCH 53
		1.8 NM	3.6 NM	
CATEGORY	A	B	C	D
S-ILS 31	936-½		203 (200-½)	
S-LOC 31 *	1280-½	547 (600-½)	1280-½	547 (600-½)
CIRCLING	1300-1	1440-1	1500-2	1700-3
	523 (600-1)	663 (700-1)	723 (800-2)	923 (1000-3)
UMEHU FIX MINIMUMS (DUAL RECEIVERS REQUIRED)				
S-LOC 31	1080-½	347 (400-½)	1080-½	347 (400-½)
CIRCLING	1300-1	1440-1	1500-2	1700-3
	523 (600-1)	663 (700-1)	723 (800-2)	923 (1000-3)