

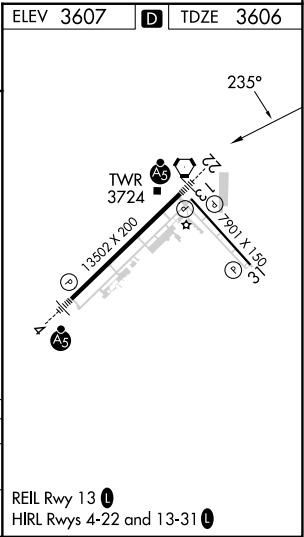
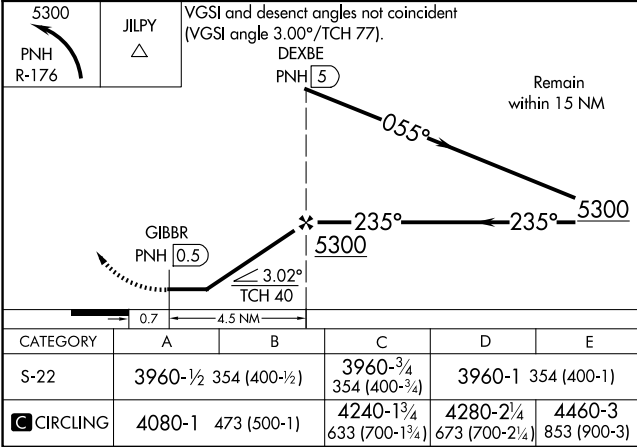
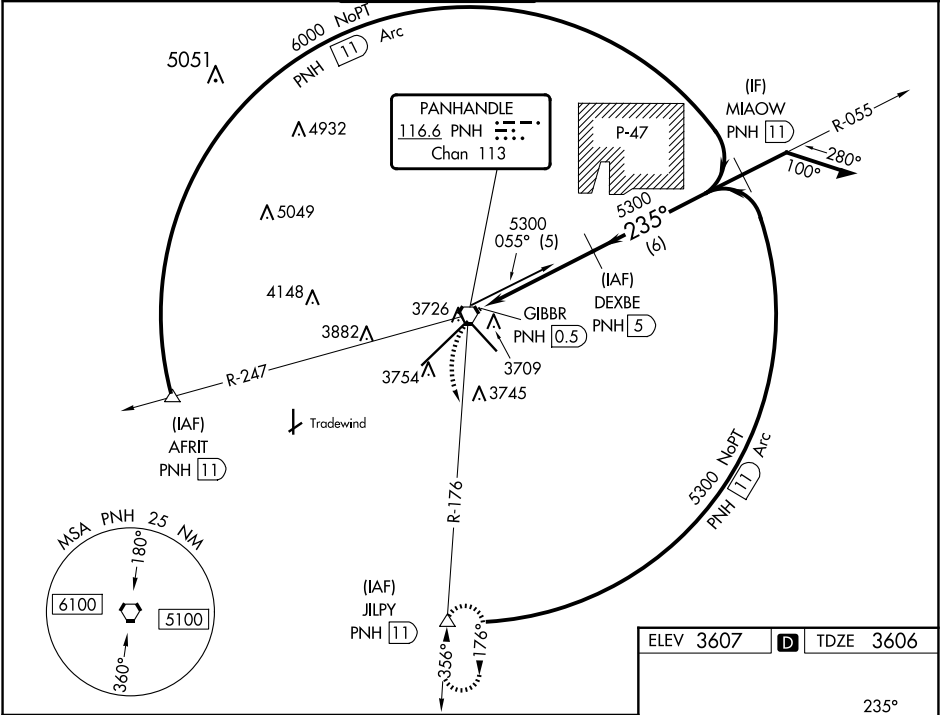
VORTAC PNH 116.6 Chan 113	APP CRS 235°	Rwy Idg TDZE Apt Elev 13502 3606 3607
---	------------------------	---

VOR RWY 22

RICK HUSBAND AMARILLO INTL (AMA)

DME required. For inop ALS, increase Cat C visibility to 1 SM. ASR	MALSR	MISSED APPROACH: Climbing left turn to 5300 on PNH R-176 to JILPY/11 DME and hold.
--	-------	--

ATIS 118.85 350.3	AMARILLO APP CON* 119.5 307.0	AMARILLO TOWER* 118.3(CTAF) 257.9	GND CON 121.9 348.6	CLNC DEL 121.65 239.275	UNICOM 122.95
-----------------------------	---	---	-------------------------------	-----------------------------------	-------------------------



VOR RWY 22

SC-2, 10 JUL 2025 to 07 AUG 2025

SC-2, 10 JUL 2025 to 07 AUG 2025