

WAAS
CH **82718**
W04A

APP CRS
038°

Rwy Idg **13502**
TDZE **3607**
Apt Elev **3607**

RNAV (GPS) Y RWY 4

RICK HUSBAND AMARILLO INTL (AMA)

RNP APCH.

▼

ASR

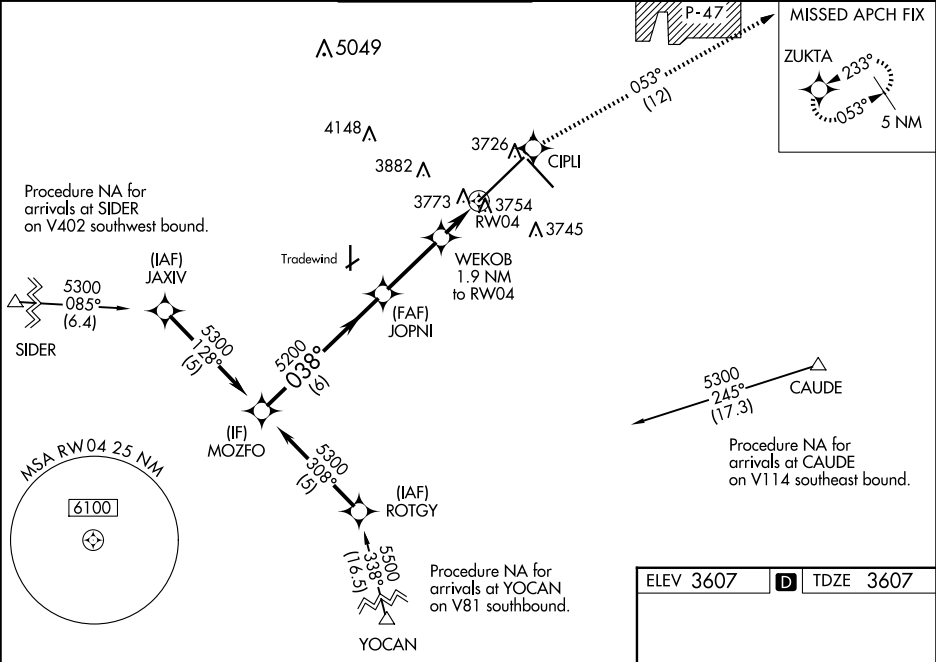
For uncompensated Baro-VNAV systems, LNAV/VNAV NA below -22°C or above 41°C. For inop ALS, increase LPV Cat E visibility to RVR 4000, and LNAV/VNAV and LNAV Cat E to 1¼ SM.
** RVR 1800 authorized with use of FD or AP or HUD to DA.

MALS R

AS

MISSED APPROACH: Climb to 5400 direct CIPLI and on track 053° to ZUKTA and hold.

ATIS 118.85 350.3	AMARILLO APP CON* 119.5 307.0	AMARILLO TOWER* 118.3 (CTAF) 257.9	GND CON 121.9 348.6	CLNC DEL 121.65 239.275	UNICOM 122.95
-----------------------------	---	--	-------------------------------	-----------------------------------	-------------------------



VGSi and RNAV glidepath not coincident (VGSi Angle 3.00/TCH 61). MOZFO					
<div><div>5300</div><div>5200</div><div>5000</div><div>4240</div></div> <div><div>GP 3.00°</div><div>TCH 44</div></div> <div><div>6 NM</div><div>2.9 NM</div><div>0.8 NM</div><div>1.1 NM</div></div>					
CATEGORY	A	B	C	D	E
LPV DA **	3807/24		200 (200-½)		
LNAV/VNAV DA	4028/50		421 (500-1)		
LNAV MDA	4040/24 433 (500-½)		4040/40 433 (500-¾)	4040/50 433 (500-1)	
CIRCLING	4080-1 473 (500-1)		4240-1¼ 633 (700-1¾)	4280-2¼ 673 (700-2¼)	4460-3 853 (900-3)

ELEV 3607

TDZE 3607

TWR 3724

REIL Rwy 13

HIRL Rlys 4-22 and 13-31