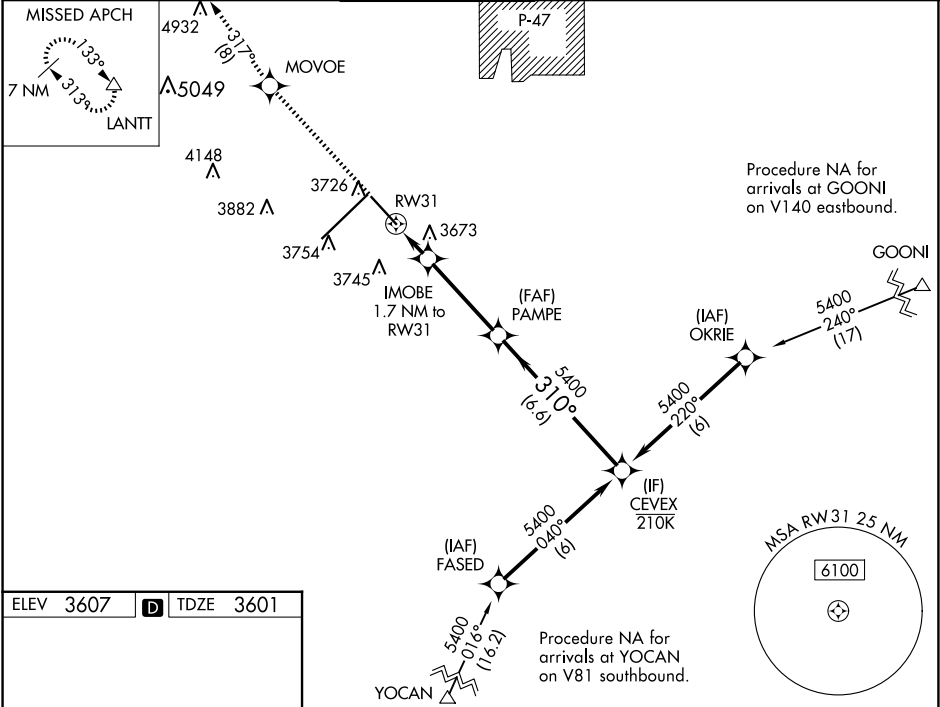


WAAS CH <b>82319</b> <b>W31A</b>	APP CRS <b>310°</b>	Rwy Idg TDZE Apt Elev	<b>7901</b> <b>3601</b> <b>3607</b>
--	------------------------	-----------------------------	---

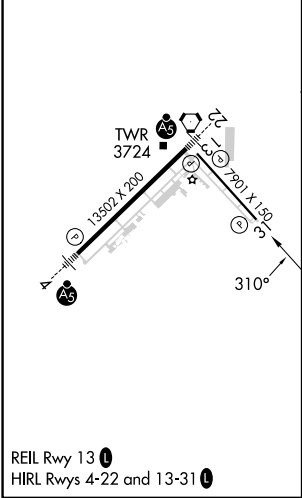
**RNAV (GPS) Y RWY 31**  
RICK HUSBAND AMARILLO INTL (AMA)

<b>⚠</b> DME/DME RNP-0.3 NA. For uncompensated Baro-VNAV systems, LNAV/VNAV NA below -14°C (7°F) or above 46°C (116°F). When local altimeter setting not received, use Borger altimeter setting; increase DA to 4004 and all visibilities ½ mile; increase all MDA 160 feet and visibility Cat C and D ½ mile. Baro-VNAV and VDP NA when using Borger altimeter setting.	<b>MISSED APPROACH:</b> Climb to 6100 direct MOVEO and on track 317° to LANIT and hold.
--	---

ATIS <b>118.85 350.3</b>	AMARILLO APP CON★ <b>119.5 307.0</b>	AMARILLO TOWER★ <b>118.3 (CTAF) 257.9</b>	GND CON <b>121.9 348.6</b>	CLNC DEL <b>121.65 239.275</b>	UNICOM <b>122.95</b>
-----------------------------	---	--	-------------------------------	-----------------------------------	-------------------------



ELEV <b>3607</b>	<b>D</b>	TDZE <b>3601</b>
------------------	----------	------------------



6100 ↑	MOVEO ✦	tr 317° ↻	LANIT △		
<p>*LNAV only.</p> <p>IMOBE 1.7 NM to RW31</p> <p>RW31 0.9 NM to RW31</p> <p>PAMPE 5400</p> <p>CEVEX 5400</p> <p>GP 3.04° TCH 52</p>					
CATEGORY	A		B	C	D
LPV DA	3851-3/4 250 (300-3/4)				
LNAV/VNAV DA	3851-3/4 250 (300-3/4)				
LNAV MDA	3940-1 339 (400-1)				
CIRCLING	4080-1	473 (500-1)	4240-1 3/4 633 (700-1 1/4)	4280-2 1/4 673 (700-2 1/4)	

SC-2, 10 JUL 2025 to 07 AUG 2025

SC-2, 10 JUL 2025 to 07 AUG 2025