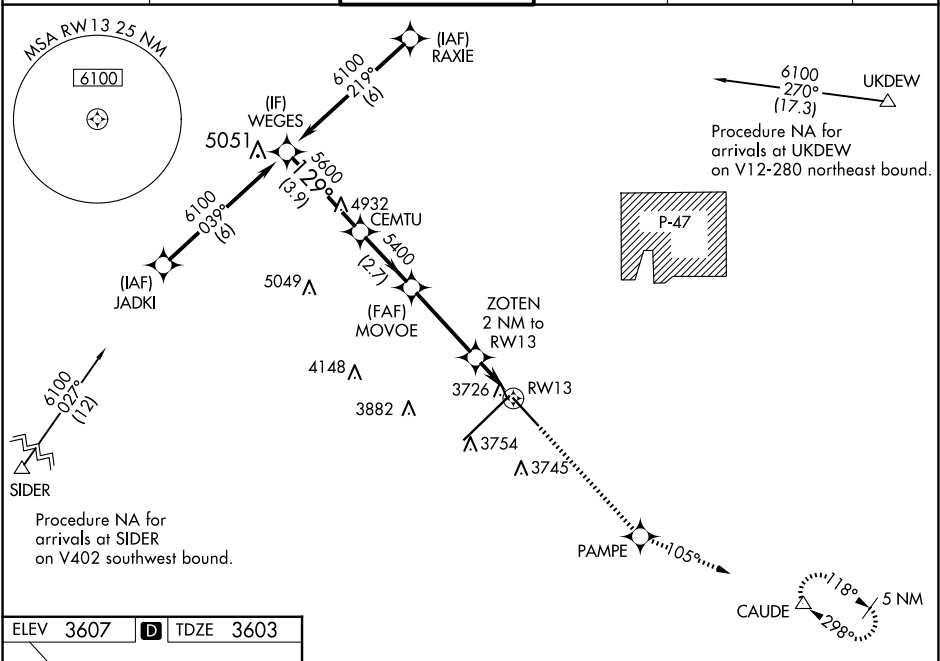


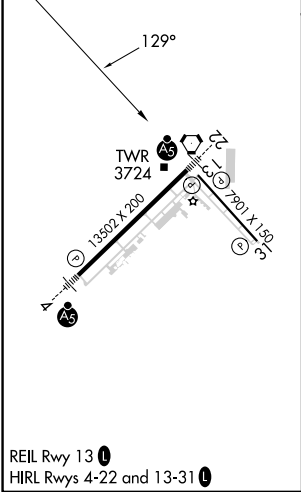
WAAS CH 57919 W13A	APP CRS 129°	Rwy Idg TDZE 3603 Apt Elev 3607
--	------------------------	---

RNAV (GPS) Y RWY 13
RICK HUSBAND AMARILLO INTL (AMA)

RNP APCH. <div>For uncompensated Baro-VNAV systems, LNAV/VNAV NA below -22°C or above 41°C. ASR</div>			MISSED APPROACH: Climb to 5400 direct PAMPE and on track 105° to CAUDE and hold.		
ATIS 118.85 350.3	AMARILLO APP CON★ 119.5 307.0	AMARILLO TOWER★ 118.3(CTAF) 257.9	GND CON 121.9 348.6	CLNC DEL 121.65 239.275	UNICOM 122.95



ELEV 3607	D	TDZE 3603
------------------	----------	------------------



WEGES		CEMTU		MOVOE		ZOTEN 2 NM to RW13		PAMPE		CAUDE	
6100		5600		5400		*4280		5400		tr 105°	
Procedure Turn NA								*1 NM to RW13		*LNAV only.	
GP 3.00° TCH 52										RW13	
		3.9 NM		2.7 NM		3.4 NM		1 NM		1 NM	
CATEGORY		A		B		C		D			
LPV DA				3803-3/4		200 (200-3/4)					
LNAV/ VNAV DA				3976-1 1/4		373 (400-1 1/4)					
LNAV MDA				3980-1		377 (400-1)				3980-1 1/4 377 (400-1 1/4)	
CIRCLING		4080-1		473 (500-1)		4240-1 3/4 633 (700-1 1/4)		4280-2 1/4 673 (700-2 1/4)			

SC-2, 10 JUL 2025 to 07 AUG 2025

SC-2, 10 JUL 2025 to 07 AUG 2025