

LDA RWY 22
RICK HUSBAND AMARILLO INTL (AMA)

MISSED APPROACH: Climbing left turn to 5000 on PNH VORTAC R-118 to CAUDE and hold.

LDA/GLIDE SLOPE

Final approach course offset 4.45°.

PANHANDLE
116.6 PNH
Chan 113

(IAF)
CIXFE
I-RIQ [5]

ENIHU
I-RIQ [1.5]

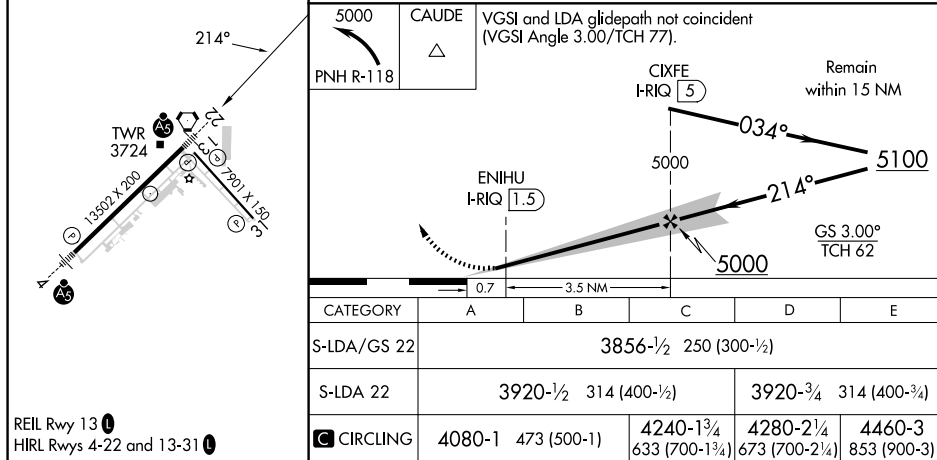
R-118

LOCALIZER 111.1
I-RIQ
Chan 48

CAUDE
PNH [13]

MSA PNH 25 NM

ELEV 3607 TDZE 3606



SC-2, 10 JUL 2025 to 07 AUG 2025