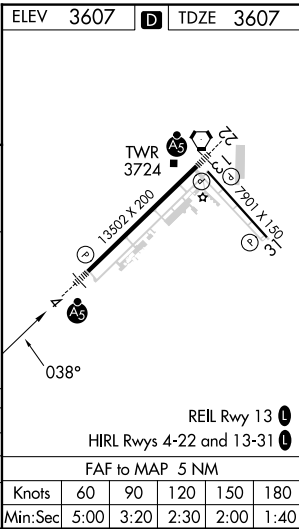
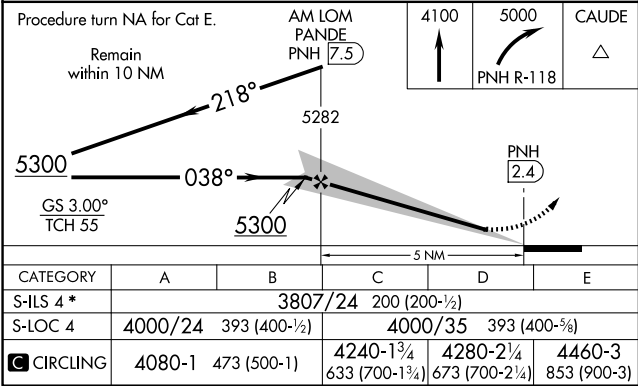
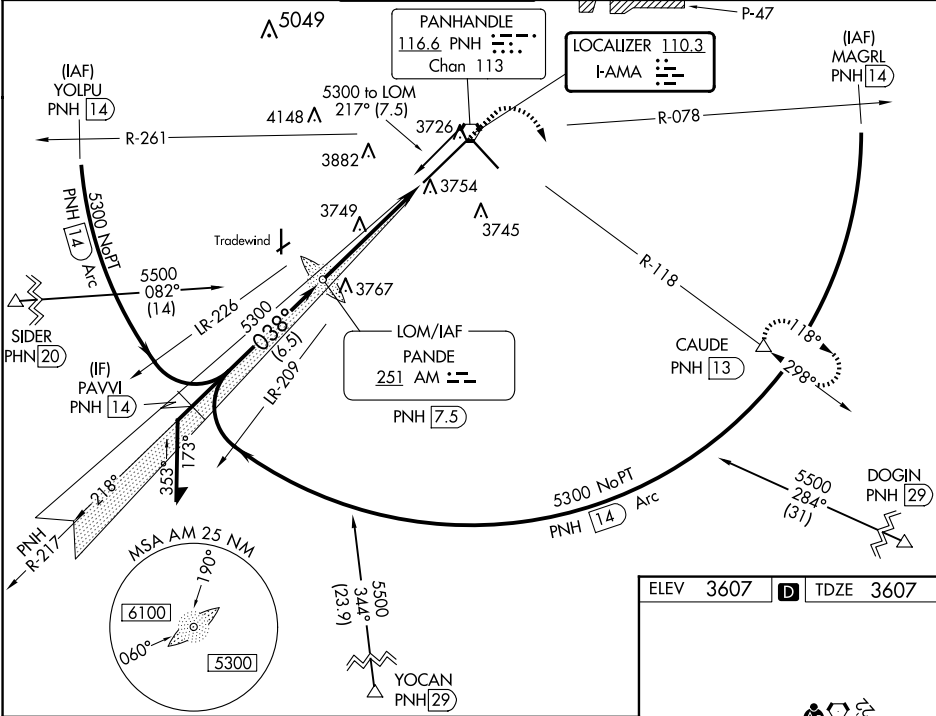


LOC I-AMA 110.3	APP CRS 038°	Rwy Idg 13502 TDZE 3607 Apt Elev 3607
---------------------------	------------------------	--

ILS or LOC RWY 4
RICK HUSBAND AMARILLO INTL (AMA)

ADF or DME required. When local altimeter setting not received, use Borger altimeter setting and increase S-ILS 4 DA to 3960 feet and all visibilities to RVR 3000. Increase all MDAs 160 feet and S-LOC 4 visibility Cat C/D/E to RVR 6000 and Circling visibility Cat C/D ½ SM. For inop ALS, increase visibility S-ILS 4 Cat E to 4000 RVR and S-LOC 4 Cat C/D/E to RVR 6000. For inop ALS when using Borger altimeter setting, increase visibility S-ILS 4 all Cats to 5500 and S-LOC 4 Cat C/D/E to 1½ SM. * RVR 1800 authorized with use of FD or AP or HUD to DA (NA when using Borger altimeter setting).	MALSR ASR MISSED APPROACH: Climb to 4100 then climbing right turn to 5000 on PNH VORTAC R-118 to CAUDE/ PNH 13 DME and hold.
--	--

ATIS 118.85 350.3	AMARILLO APP CON* 119.5 307.0	AMARILLO TOWER* 118.3(CTAF) 257.9	GND CON 121.9 348.6	CLNC DEL 121.65 239.275	UNICOM 122.95
-----------------------------	---	---	-------------------------------	-----------------------------------	-------------------------



SC-2, 10 JUL 2025 to 07 AUG 2025

SC-2, 10 JUL 2025 to 07 AUG 2025