

AMARILLO, TEXAS

HI-VOR or TACAN RWY 13

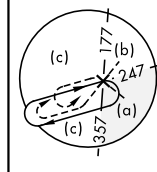
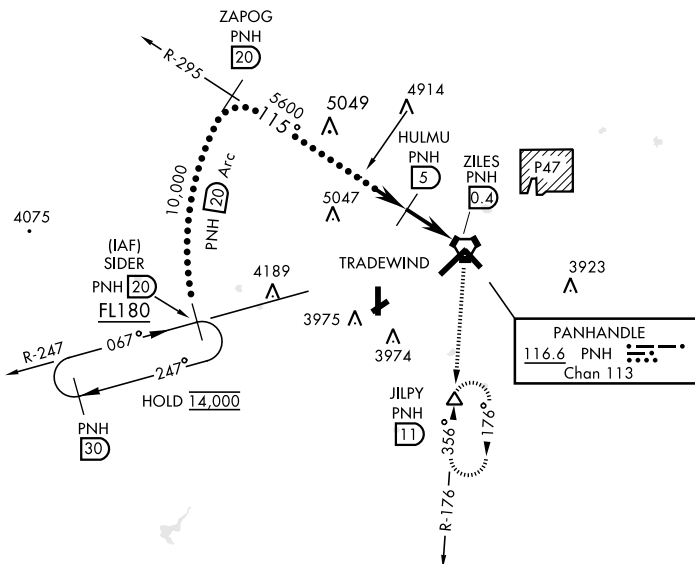
VORTAC PNH 116.6 Chan 113	APCH CRS 115°	Rwy Idg 7901 TDZE 3603 Arpt Elev 3607	[USAF]	RICK HUSBAND AMARILLO INTL (KAMA)
-----------------------------------------------	-------------------------	------------------------------------------------------------------	--------	-----------------------------------

DME required

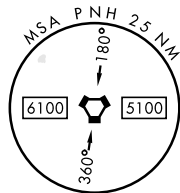
When local altimeter setting not received,
use Borger altimeter setting.

MISSED APPROACH: Climbing right turn to 5300 on PNH VORTAC R-176 to JILPY/11 DME and hold.

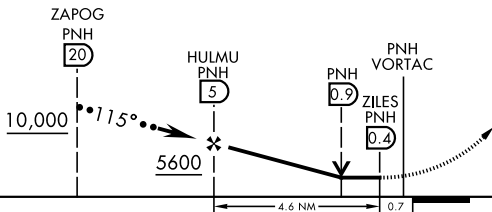
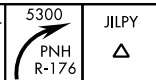
ATIS 118.85 350.3	AMARILLO APP CON 119.5 307.0	AMARILLO TOWER★ 118.3(CTAF) 0 257.9	GND CON 121.9 348.6	CLNC DEL 121.65 239.275	ASR
----------------------	---------------------------------	----------------------------------------	------------------------	----------------------------	-----



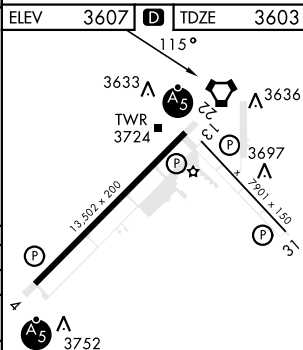
EMERG SAFE ALT 100 NM 7500



VGS1 and descent angles not coincident



CATEGORY	C	D	E
S-13	4040-1¼	437	(500-1¼)
C CIRCLING	4240-1¾ 633 (700-1¾)	4280-2¼ 673 (700-2¼)	4460-3 853 (900-3)
WITH BORGER ALTIMETER SETTING			
S-13	4200-1¼	597	(600-1¼)
C CIRCLING	4400-2¼ 793 (900-2¼)	4440-2¾ 833 (900-2¾)	4620-3 1013 (1100-3)



HIRL all rwys **L**
REIL Rwy 13 **L**

AMARILLO, TEXAS

35°13'N-101°42'W

RICK HUSBAND AMARILLO INTL (KAMA)

Orig B 27FEB20

HI-VOR or TACAN RWY 13

SC-2, 10 JUL 2025 to 07 AUG 2025

SC-2, 10 JUL 2025 to 07 AUG 2025