

WAAS CH <b>93500</b> <b>W20A</b>	APP CRS <b>203°</b>	Rwy Ldg <b>8519</b> TDZE <b>7540</b> Apt Elev <b>7540</b>
--	------------------------	---

RNAV (GPS) RWY 20  
SAN LUIS VALLEY RGNL/BERGMAN FLD (ALS)

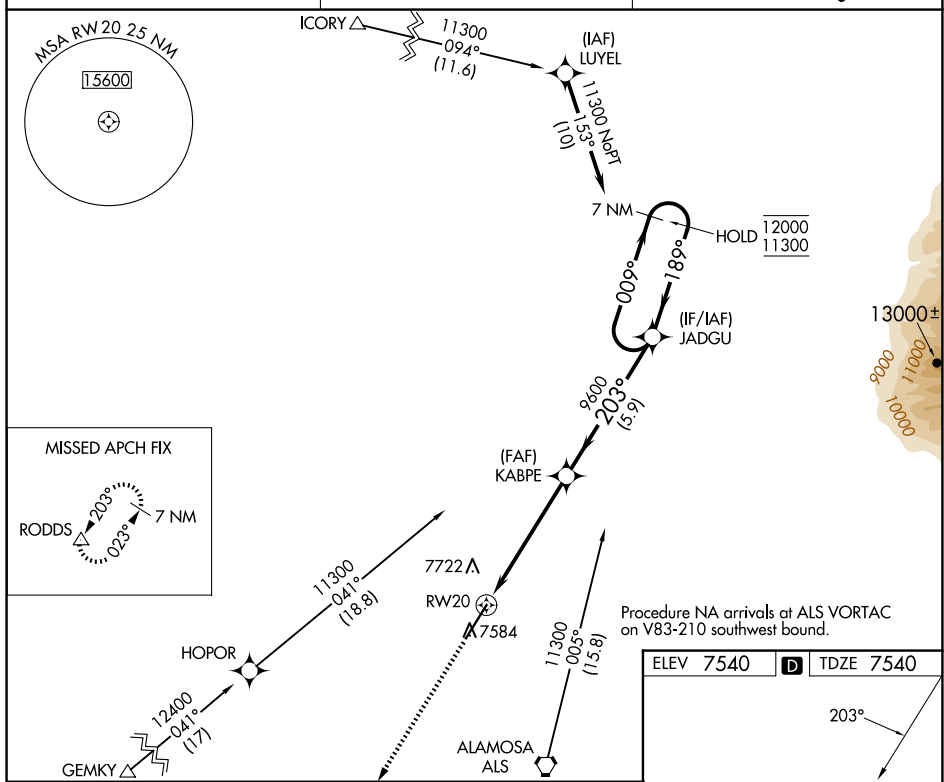
RNP APCH-GPS.

**T** Rwy 20 helicopter visibility reduction below  $\frac{3}{4}$  SM NA. For uncompensated  
**-25°C** Baro-VNAV systems, LNAV/VNAV NA below -31°C or above 54°C.

**MISSED APPROACH:** Climb to 11 500 direct RODDS and hold, continue climb-in-hold to 11 500.

ASOS  
135.175

DENVER CENTER  
**128,375 379.95**

UNICOM  
122.8 (CTAF) **L**

Procedure NA arrivals at ALS VORTAC  
on V83-210 southwest bound.

11500  
↑  
RODDES  
△

VGSi and RNAV glidepath not coincident  
(VGSi Angle 3.00/TCH 41).

JADGU  
7 NM Holding Pattern

KABPE  
9600

1.3 NM to RW20

RW20

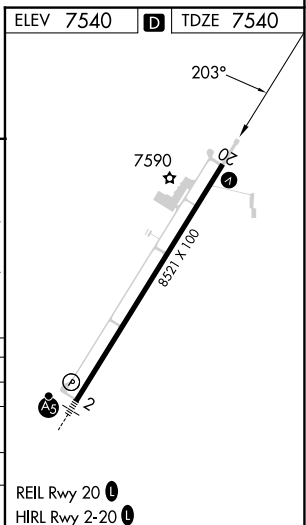
203°

009° → 12000  
← 189° 11300

9600

GP 3.46°  
TCH 60

	1.3 NM	4.1 NM	5.9 NM	
CATEGORY	A	B	C	D
LPV DA	7812-7 $\frac{7}{8}$		272 (300-7 $\frac{7}{8}$ )	
RNAV/ VNAV DA	7810-7 $\frac{7}{8}$		270 (300-7 $\frac{7}{8}$ )	
RNAV MDA	8000-1	460 (500-1)	8000-1 $\frac{3}{8}$	460 (500-1 $\frac{3}{8}$ )
<b>C</b> CIRCLING	8040-1	500 (500-1)	8080-1 $\frac{1}{2}$ 540 (600-1 $\frac{1}{2}$ )	8100-2 560 (600-2)



## RNAV (GPS) RWY 20

SW-1, 10 JUL 2025 to 07 AUG 2025

SW-1, 10 JUL 2025 to 07 AUG 2025