

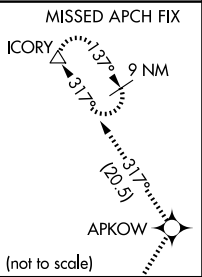
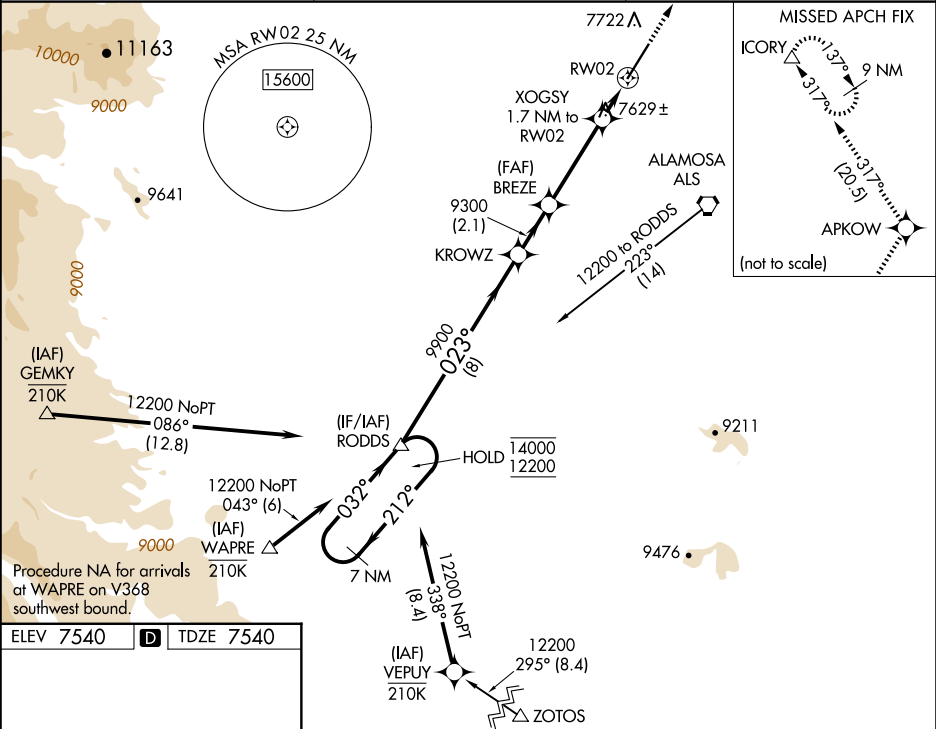
WAAS CH 90410 W02A	APP CRS 023°	Rwy Ldg TDZE 7540 Apt Elev 7540
--	------------------------	---

RNAV (GPS) RWY 2

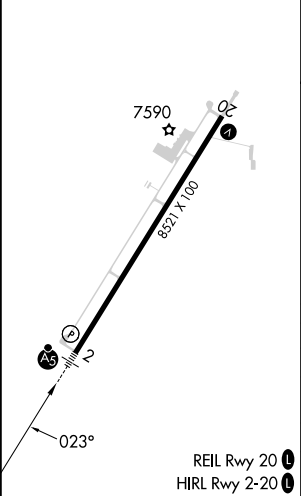
SAN LUIS VALLEY RGNL/BERGMAN FLD (ALS)

RNP APCH-GPS. ▼ -25°C For uncompensated Baro-VNAV systems, LNAV/VNAV NA below -31°C or above 54°C. For inop ALS, increase LNAV/VNAV all Cats visibility to ¾ SM.	MALSR AS MISSED APPROACH: Climb to 14600 direct APKOW and on track 317° to ICORY and hold, continue climb-in-hold to 14600.
---	---

ASOS 135.175	DENVER CENTER 128,375 379.95	UNICOM 122.8 (CTAF) 0
------------------------	--	---------------------------------



ELEV 7540	D	TDZE 7540
-----------	---	-----------



7 NM Holding Pattern		RODDS		KROWZ		BREZE		14600 ↑		APKOW ✦		tr 317°		ICORY △	
14000 ← 212°		12200 → 032°		023°		9300		9300		XOGSY 1.7 NM to RW02		0.9 NM to RW02		RW02	
GP 3.00° TCH 48				9900		9300		8140							
		8 NM		2.1 NM		3.6 NM		0.8 NM		0.9 NM					
CATEGORY		A		B		C						D			
LPV DA				7740-½		200 (200-½)									
LNAV/ VNAV DA				7790-½		250 (300-½)									
LNAV MDA				7880-½		340 (400-½)									
CIRCLING		8040-1		500 (500-1)		8080-1½		540 (600-1½)		8100-2		560 (600-2)			