

LOC I-VQR	APP CRS	Rwy Ldg	<b>8519</b>
<b><u>111.9</u></b>	<b>023°</b>	TDZE	<b>7540</b>
		Apt Elev	<b>7540</b>

ILS or LOC RWY 2  
SAN LUIS VALLEY RGNL/BERGMAN FLD (ALS)

For inop ALS, increase S-LOC 2 Cats C/D visibility to 1 $\frac{3}{8}$  SM.

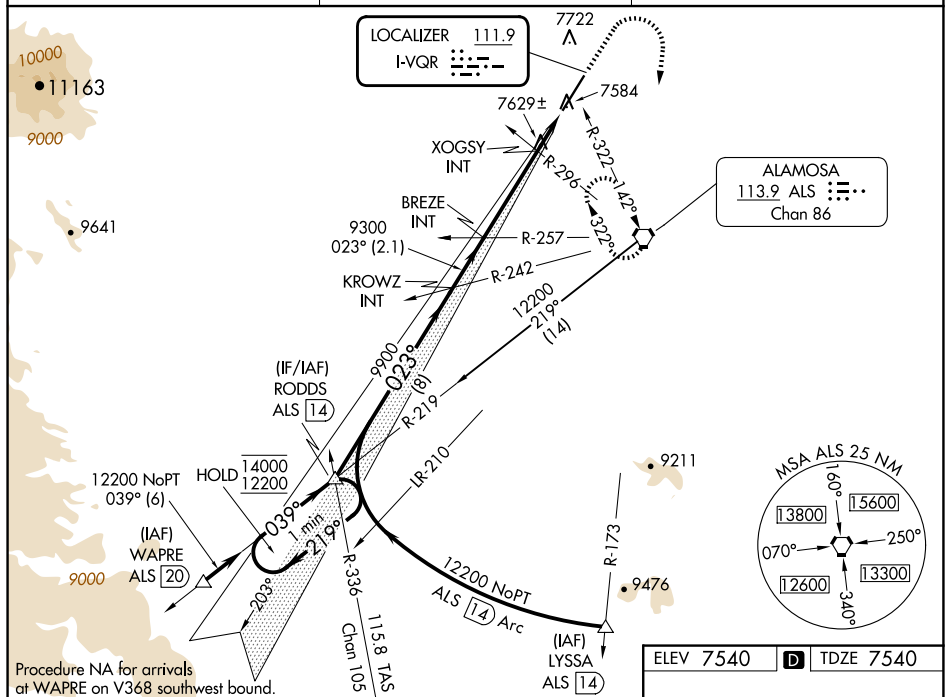
MALSR



**MISSED APPROACH:** Climb to 8700 then climbing right turn to 11000 direct ALS VORTAC and hold, continue climb in hold to 11000.

ASOS  
135.175

DENVER CENTER  
**128.375 379.95**

UNICOM  
122.8 (CTAF) **L**

Procedure NA for arrivals  
at WAPRE on V368 southwest bound.

