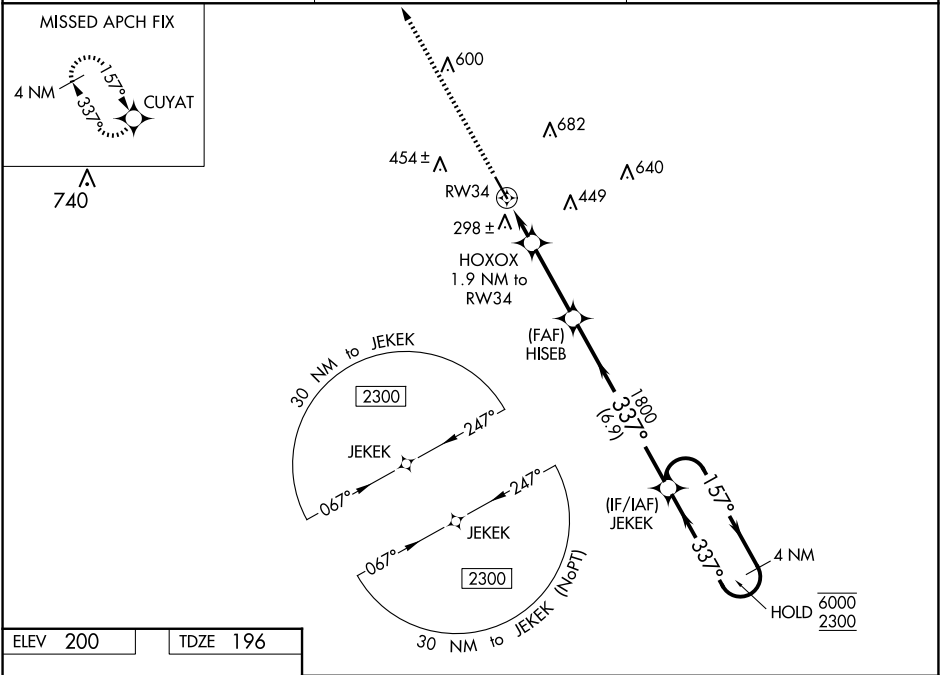


WAAS CH 70635 W34A	APP CRS 337°	Rwy Idg TDZE 196 Apt Elev 200	5000
----------------------------------------	------------------------	---------------------------------------------------	-------------

RNAV (GPS) RWY 34
BACON COUNTY (AMG)

RNP APCH-GPS. ▼ Rwy 34 helicopter visibility reduction below ¾ SM NA. ▲ For uncompensated Baro-VNAV systems, LNAV/VNAV NA below -4°C or above 54°C.	MISSED APPROACH: Climb to 2300 direct CUYAT and hold.
-----------------------------------------------------------------------------------------------------------------------------------------------------------	-------------------------------------------------------

ASOS 118.325	JACKSONVILLE CENTER 127.575 269.025	UNICOM 122.7 (CTAF) 0
------------------------	-----------------------------------------------	---------------------------------



REIL Rwy 16 and 34
MRL Rwy 16-34

3300

↑

CUYAT

VGSI and RNAV glidepath not coincident
(VGSI Angle 3.00/TCH 30).

4 NM Holding Pattern

JEKEK

HOXOX
1.9 NM to RW34

HISEB
1800

1.1 NM to RW34

RW34

820

1800

337°

157° → 6000

← 337° 2300

GP 3.00°
TCH 40

1.1

0.8

3.1 NM

6.9 NM

CATEGORY	A	B	C	D
LPV DA	452-7/8 256 (300-7/8)			
LNAV/VNAV DA	459-7/8 263 (300-7/8)			
LNAV MDA	560-1 364 (400-1)			
CIRCLING	720-1 520 (600-1)	1000-2 1/4 800 (800-2 1/4)		1000-2 1/2 800 (800-2 1/2)

SE-4, 10 JUL 2025 to 07 AUG 2025

SE-4, 10 JUL 2025 to 07 AUG 2025