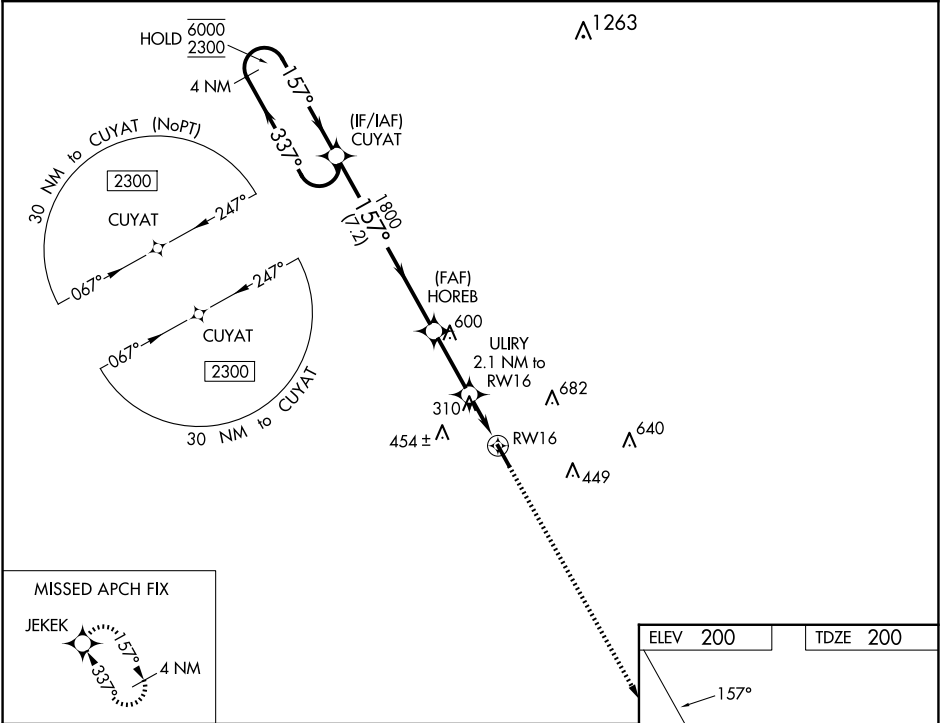


WAAS CH 45537 W16A	APP CRS 157°	Rwy Idg TDZE Apt Elev	5000 200 200
--	------------------------	-----------------------------	---

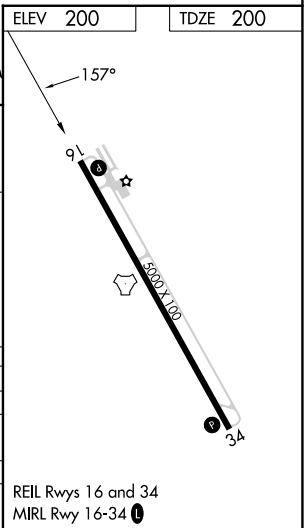
RNAV (GPS) RWY 16
BACON COUNTY (AMG)

RNP APCH.	MISSED APPROACH: Climb to 2300 direct to JEKEK and hold.
<div><div></div><div>Rwy 16 helicopter visibility reduction below ¾ SM NA. For uncompensated Baro-VNAV systems, LNAV/VNAV NA below -4°C or above 54°C.</div></div>	

ASOS 118.325	JACKSONVILLE CENTER 127.575 269.025	UNICOM 122.7 (CTAF) 1
------------------------	---	--



4 NM Holding Pattern		VGSI and RNAV glidepath not coincident (VGSI Angle 3.00/TCH 40).		2300	JEKEK
6000 2300		HOREB 1800		* LNAV only	
GP 3.10° TCH 55		ULIRY 2.1 NM to RWY 16			
		* 940			
		RWY 16			
		7.2 NM			
		2.6 NM			
		1.1 NM			
		1 NM			
CATEGORY	A	B	C	D	
LPV DA		461-7/8	261 (300-7/8)		
LNAV/VNAV DA		468-7/8	268 (300-7/8)		
LNAV MDA		560-1	360 (400-1)		
CIRCLING	720-1	520 (600-1)	1000-2 ¼ 800 (800-2 ¼)	1000-2 ½ 800 (800-2 ½)	



SE-4, 10 JUL 2025 to 07 AUG 2025

SE-4, 10 JUL 2025 to 07 AUG 2025