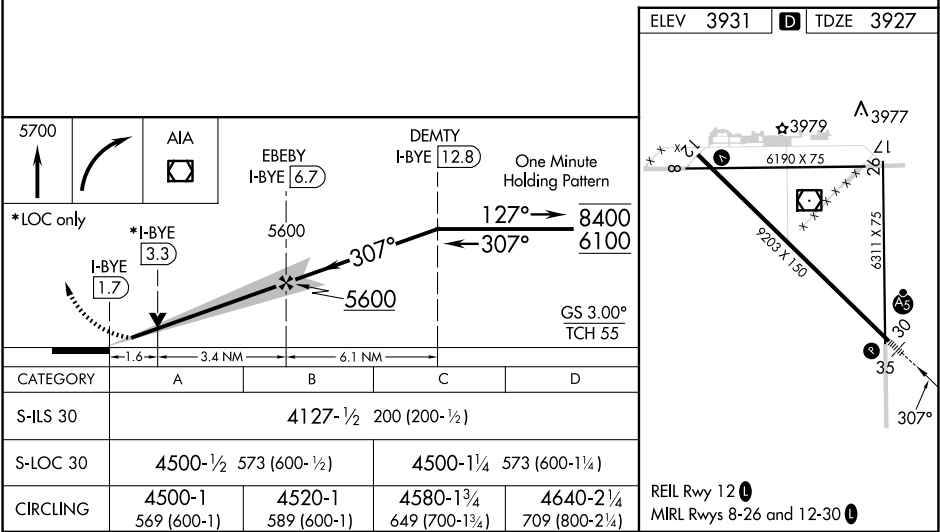
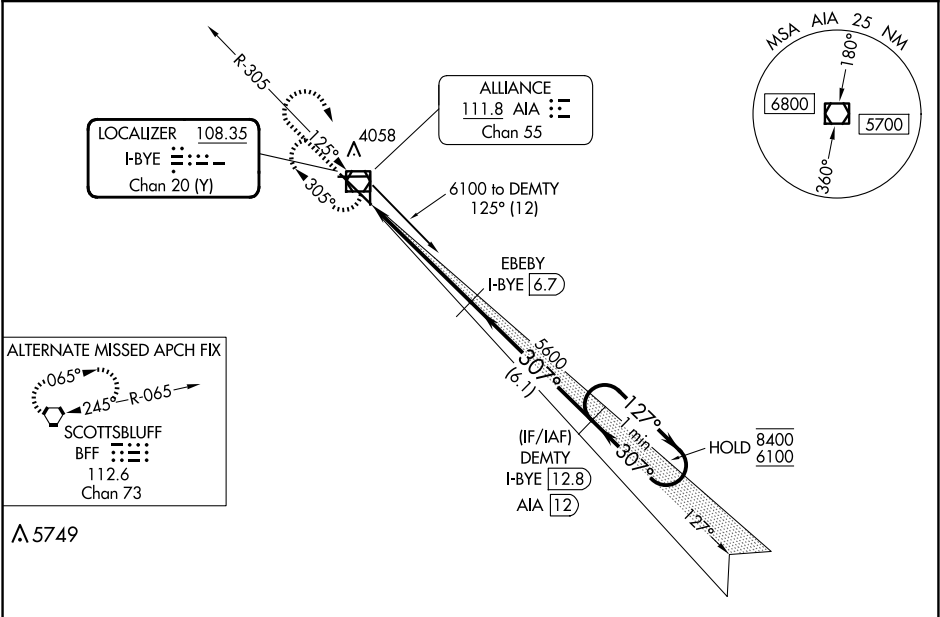


LOC/DME I-BYE <b>108.35</b> Chan 20 (Y)	APP CRS <b>307°</b>	Rwy Idg <b>9203</b> TDZE <b>3927</b> Apt Elev <b>3931</b>
-----------------------------------------------	------------------------	-----------------------------------------------------------------

ILS or LOC RWY 30  
ALLIANCE MUNI (AIA)

DME required. ▲NA For inop ALS, increase S-LOC 30 Cats C/D visibility to 1½ SM.	MALSR 	MISSED APPROACH: Climb to 5700 then right turn direct AIA VOR/DME and hold.
ASOS <b>135.075</b>	DENVER CENTER <b>127.95 338.2</b>	UNICOM <b>123.0 (CTAF) 0</b>



NC-2, 10 JUL 2025 to 07 AUG 2025

NC-2, 10 JUL 2025 to 07 AUG 2025